



User Friendly  
Safety First  
Attention to Detail  
Compliance  
Keep it Simple

## 24T Auger Tender Manual



No company is complete without

**SERVICE**

“Our goal is to work hand in hand with you to offer the best equipment at the best price with unmatched service. We believe serving our customer is the key to success.”

**HAYS LTI**

P.O. Box 514 | Camilla, GA 31730

1.866.547.4297

229.336.7103

Fax 229.336.5297

[www.hayslti.com](http://www.hayslti.com)

# EXPERIENCE THE HAYS DIFFERENCE



P.O. BOX 514  
CAMILLA, GEORGIA 31730  
229-336-7103 (FAX) 229-336-5297  
RONALD HAYS --- DONNA STEWART  
[www.hayslti.com](http://www.hayslti.com)

## TABLE OF CONTENTS

1. Table of Contents.....	2
2. Customer Unit Information.....	3
3. About Hays.....	4-5
4. Safety.....	6
5. Daily Checklist.....	7
6. Operation.....	8
7. Maintenance.....	9
8. 24T-2C Specifications.....	10
9. 24T-3C Specifications.....	11
10. Hopper Specifications and Parts.....	12-17
11. Auger Systems.....	18-25
12. Engine Parts.....	26-27
13. Hydraulic System.....	28-30
14. Fuel Tank.....	31
15. Axle and Suspension Parts.....	32-35
16. Landing Gear Parts.....	36
17. Trailer Parts.....	37
18. Lights and Decals.....	38-41
19. Warranty.....	42

## HAYS Tender Unit Information

<b>Customer</b>	
<b>Unit Number</b>	
<b>Model and Serial Number</b>	
<b>Tag Number</b>	
<b>Date Of Manufacture</b>	

<b>Engine</b>	
Model and Serial Number	

<b>Hydraulic Pump</b>	
Model and Serial Number	

<b>Discharge Auger Motor</b>	
Model and Serial Number	

<b>Belly Auger Motor</b>	
Model and Serial Number	

<b>Tarp System</b>	
Make and Model	

**NOTES:**



P.O. BOX 514  
CAMILLA, GEORGIA 31730  
229-336-7103 (FAX) 229-336-5297  
RONALD HAYS --- DONNA STEWART  
[www.hayslti.com](http://www.hayslti.com)  
1-866-547-4297

## ABOUT HAYS-LTI

Ronald and Donna's parents, Ray and Kay Hays, began Hays Equipment Company in the early 70's. In their early teens Ronald and Donna began working with the company and developed a love for their family business. Ray and Kay taught their children the ins and outs of the company and inspired Ronald and Donna to take great pride in their work. When their dad retired he offered the family business to Donna and Ronald. Ray had given them a great foundation to build on. They had time invested, a love for what they did, a good name, a good product, great customers and a strong determination to make Hays Equipment Company the best it could be.

On October 23, 1989, Ronald and Donna, along with their spouses Jimmy and Carrol started Liquid Transport, Inc. They made a commitment to provide the best quality equipment at the most competitive price and to top their equipment off with unbeatable service. Jimmy and Carrol also grew up in small family owned businesses that shared the same ideals. They each were raised knowing that relationship matters more than anything and that their word is their strongest asset. Their parents instilled in them the value of making friends of their customers and giving their customer every reason to want to do business with them over and over again.

The customers remained loyal and the Hays products grew stronger. In 1989, the decision was made to offer equipment not only through Retail but also through a Rental Program. Two Hays Transport Tankers were manufactured and the Rental Fleet was born. These same two tankers remain in the Fleet today, still generating income twenty-six years later. Over the past twenty-six years the Rental Fleet has grown to over 500 units and Retail Sales have been made in almost every state in the United States.

As their retail products and rental fleet evolved, the company grew to be about more than "liquid" fertilizer hauling equipment but "dry" fertilizer hauling equipment, too. In honoring the name of the one who started their love for family business and redefining their company as more than just liquid, but dry fertilizer hauling equipment as well, they added HAYS to their name and shortened Liquid Transport, Inc. to LTI. Today, they are known throughout the Agribusiness Industry and do business as Hays-LTI.

So, it all began in the early 70's and then in 1989 with new determination, great products and loyal customers the concept of Retail, Rental, Rebuild and Repair has made Hays-LTI a name known throughout the Agribusiness Industry. Hays-LTI prides itself on building lasting relationships, offering great products with unbeatable service and helping their customers get the very most from their investment in the Hays-LTI dream.

At Hays-LTI, doing business is just plain fun because we work for the best people in the greatest Industry in the world.

To learn more about our family and our company please visit [www.hayslti.com](http://www.hayslti.com) and watch our video

***"The Hays Difference"***



Experience

“The HAYS Difference”

## MEET OUR TEAM



**Ray Hays**  
Founder



**Ronald Hays**  
Co-Owner  
ronaldhays@camillaga.net



**Donna H. Stewart**  
Co-Owner  
donnastewart@camillaga.net



**Jimmy Stewart**  
Co-Owner  
jimmystewart@camillaga.net



**Matt Hays**  
Sales & Production  
matthays@camillaga.net



**Laura Pinson**  
Sales & Marketing  
laurapinson@camillaga.net



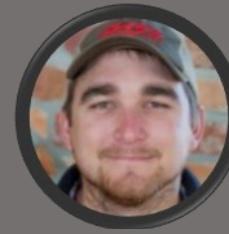
**Tim Sanders**  
Fleet Manager  
timsanders@camillaga.net



**Dusty Shiver**  
Sales & Purchasing  
dusty@camillaga.net



**Ken Pate**  
Sales & Purchasing  
dusty@camillaga.net



**Will Murphy**  
Engineering  
willmurphy@camillaga.net

# Safety First

Safety is a serious issue when dealing with large equipment. For the sake of our employees and customers, safety is most important to Hays-LTI. Product safety starts with our attention to detail. We are constantly improving our equipment with up to date safety features that not only enhance our equipment but also promote safer ways of operating our equipment. All products manufactured by Hays-LTI have extensive operation and safety decals so that the operator, whether new or seasoned, is reminded of the safest way to use our equipment. Safety isn't always something difficult. Many simple steps can be taken to make safety a minute by minute habit.

**USER-FRIENDLY DESIGN  
ATTENTION TO DETAIL  
OPERATIONS MANUAL  
SAFETY DECALS  
OPERATION DECALS**

**“Do it Safe Every Time”  
“Keep it Simple”**

# Daily Checklist

- Perform a visual inspection of the unit. Note wear and tear for future repairs. Repair items that could cause equipment failure.
- Check diesel and engine oil.
- Check hydraulic fluid level.
- Check brake hoses and fittings.
- Check brake linings and adjustment.
- Check lights and wiring.
- Check and maintain proper tire pressure.
- Check wheel lugs daily.
- Routinely check tightness of tie-down bolts .
- Routinely check tightness of all bolts and nuts.
- Be sure all guards or other safety devices and decals are in place and functioning properly.
- Grease daily. Do not over grease, typically one or two shots is sufficient.
- Check DOT Inspection to insure annual inspection is not expired.

**Safety First!**

# Operation

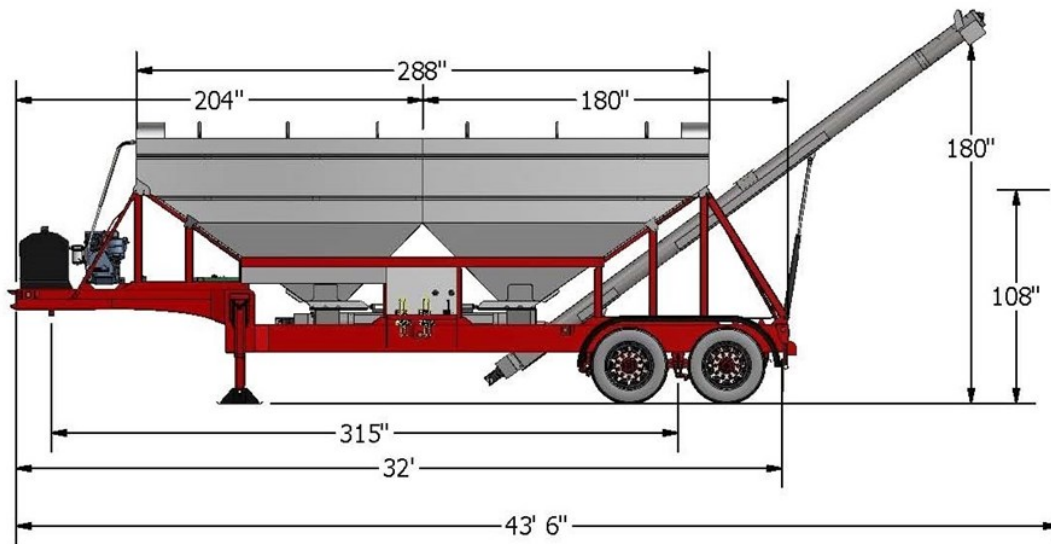
- Before Operation make sure Daily Inspection is completed.
- Open roll tarp.
- Start Engine **(Stay away from moving parts when tender is in operation.)**
- Adjust Discharge Auger Height.
- Start Discharge Auger.
- Start Belly Auger.
- Set Engine Speed.
- Start Flow of Material by opening main door. Only open one door at a time. Slowly allow material to flow and regulate door opening to keep from overloading auger system. **(If Tender becomes clogged, turn off engine before unclogging the auger system or entering the hopper.) Entry into hopper should only be performed by authorized and trained personnel.**
- Use vibrators as needed. Occasional operation should be sufficient.
- Hydraulic Clean-out Doors should remain closed unless bottom unloading is needed.
- Use main doors to stop the flow of material. Always try to empty auger system before turning off discharge auger.
- Stop Rear Discharge Auger and lower to travel position.
- Reduce engine speed to idle and shut down engine.
- Close roll tarp.



# Maintenance

- **Appearance and Inspection.** Wash and clean tender on a regular basis. Repair as needed. Touch up paint as needed. Check and make sure all safety decals are in place.
- **Trailer Frame, Axle, Brake, and Suspension.** Inspect trailer frame for damage and repairs, repair as needed. Inspect king pin and king pin plate. Check tire wear and axle alignment. Check tire inflation. Check wheels and wheel lugs. Check brake system, replace wore or damaged hoses. Check for air leaks in brake system. Check brake linings, drums, cams and bushings. Repair or replace as needed.
- **Landing Gear and Sand Shoes.** Inspect landing gear, mounts and sand shoes. Repair or replace as needed.
- **Deutz Diesel Engine.** Inspect engine before use. Check engine oil and add as needed. Check and clean or replace air filter as needed. Replace fuel filter as needed. Service engine as described in Deutz Operation Manual.
- **Hydraulic System.** Inspect hydraulic system before use. Check and add hydraulic oil as needed. Routinely check hydraulic hoses and fittings. Replace hoses and fittings as needed. Replace hydraulic filters every 100 hours.
- **Augers and Auger System.** Inspect auger system before use. Grease bearings daily, do not over grease. Clean auger screws and tubes as needed, clean screws and tubes are critical to efficient operation. Replace worn or damaged screws and bearings as needed.
- **Hopper Doors-Main and Clean out.** Inspect hopper doors before use. Make sure doors are operating smoothly and closing completely. Keep door tracks clean and free of build up.
- **Tarp System.** Inspect tarp system before use. Check tarp canvas for wear and tear, replace or repair as needed. Check tarp bows, replace or repair as needed. Check tarp fit, adjust tension on cables as needed.

## 24T-2C Tender Specification



43' 6" Overall Length Including Discharge Auger  
 32' Trailer Frame Length  
 18" King Pin Setting  
 315" King Pin to Center Trailer Tandem  
 14,750 lbs. Empty Weight  
 288" Hopper Length  
 96" Hopper Width  
 880 Cubic Feet Hopper Capacity  
 132" Trailer Height- Ground to Hopper Top Rail  
 112" to 182" Discharge Auger Unload Height

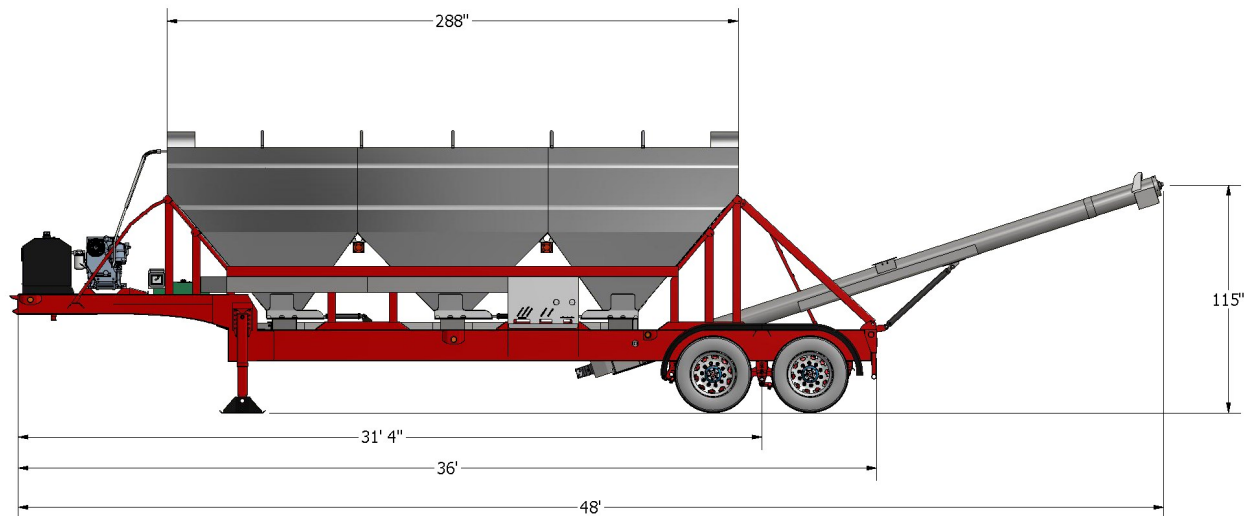
Jost 50,000 lb. Landing Gear  
 Oversized Sandshoes  
 25,000 lb. 10 Hole Uni-mount Axles  
 CH9700US Hutch Cast Suspension  
 3 Leaf HDHA Springs  
 255 70 R 22.5 Tire Size  
 8.25 x 22.5 Steel Disc Wheels  
 ABS Brake System  
 Auto Slacks  
 Grote Sealed light kit  
 Rear Poly Fenders

Deutz Diesel Engine  
 20 Gallon Fuel Tank  
 70 Gallon Hydraulic Tank  
 Heavy Duty Hydraulic System  
 Hydraulic Hose Kit - All Hose  
 Hydraulic Main Doors and Cleanout Doors  
 Hydraulic Vibrators  
 Hydraulic Belly Auger & Hydraulic Discharge Auger  
 Hydraulic Discharge Auger Lift

Stainless Steel Hopper (type 304)  
 Stainless Steel 10" Belly Auger (type 304)  
 Stainless Steel 10" Discharge Auger (type 304)  
 Stainless Steel Auger Flighting and Pipe (type 304)  
 Stainless Steel Hopper Grates (type 304)

Agri Cover Tarp System  
 Epoxy Primer and Urethane Paint System

## 24T-3C Tender Specification



48' Overall Length Including Discharge Auger  
 36' Trailer Frame Length  
 18" King Pin Setting  
 357" King Pin to Center Trailer Tandem  
 15,980 lbs. Empty Weight  
 288" Hopper Length  
 96" Hopper Width  
 920 Cubic Feet Hopper Capacity  
 132" Trailer Height- Ground to Hopper Top Rail  
 115" to 195" Discharge Auger Unload Height

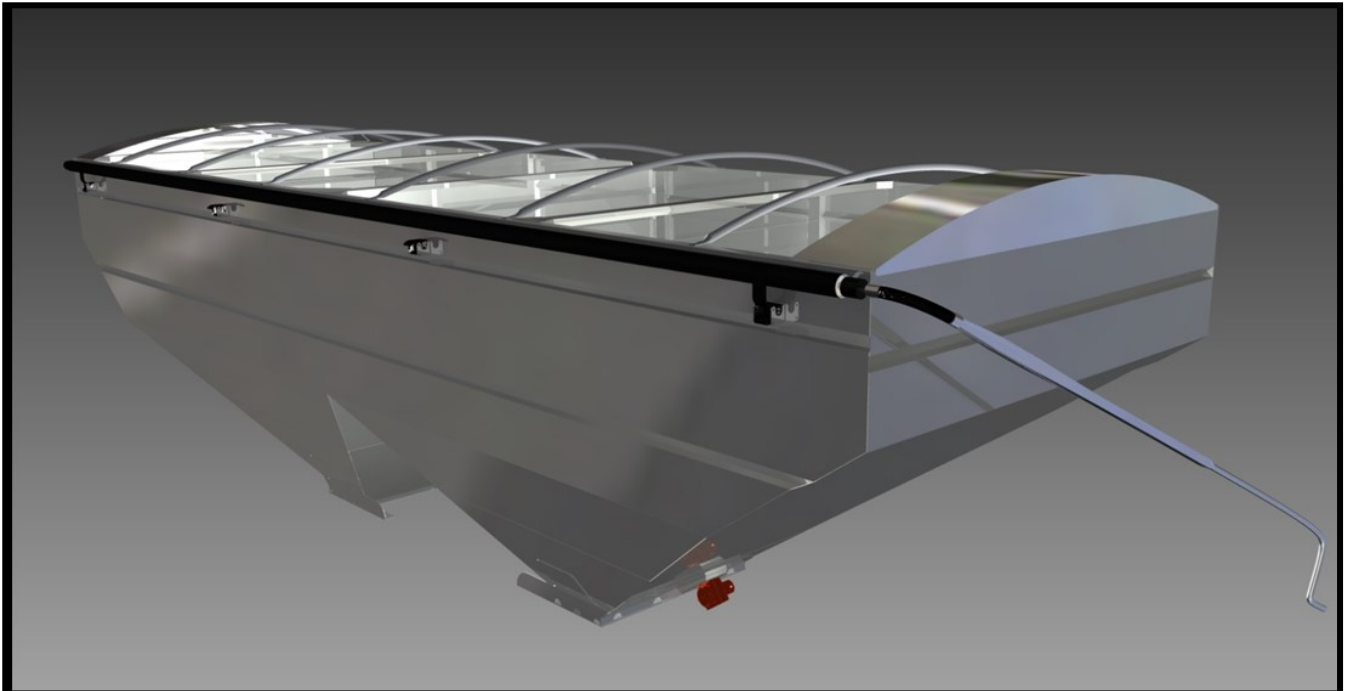
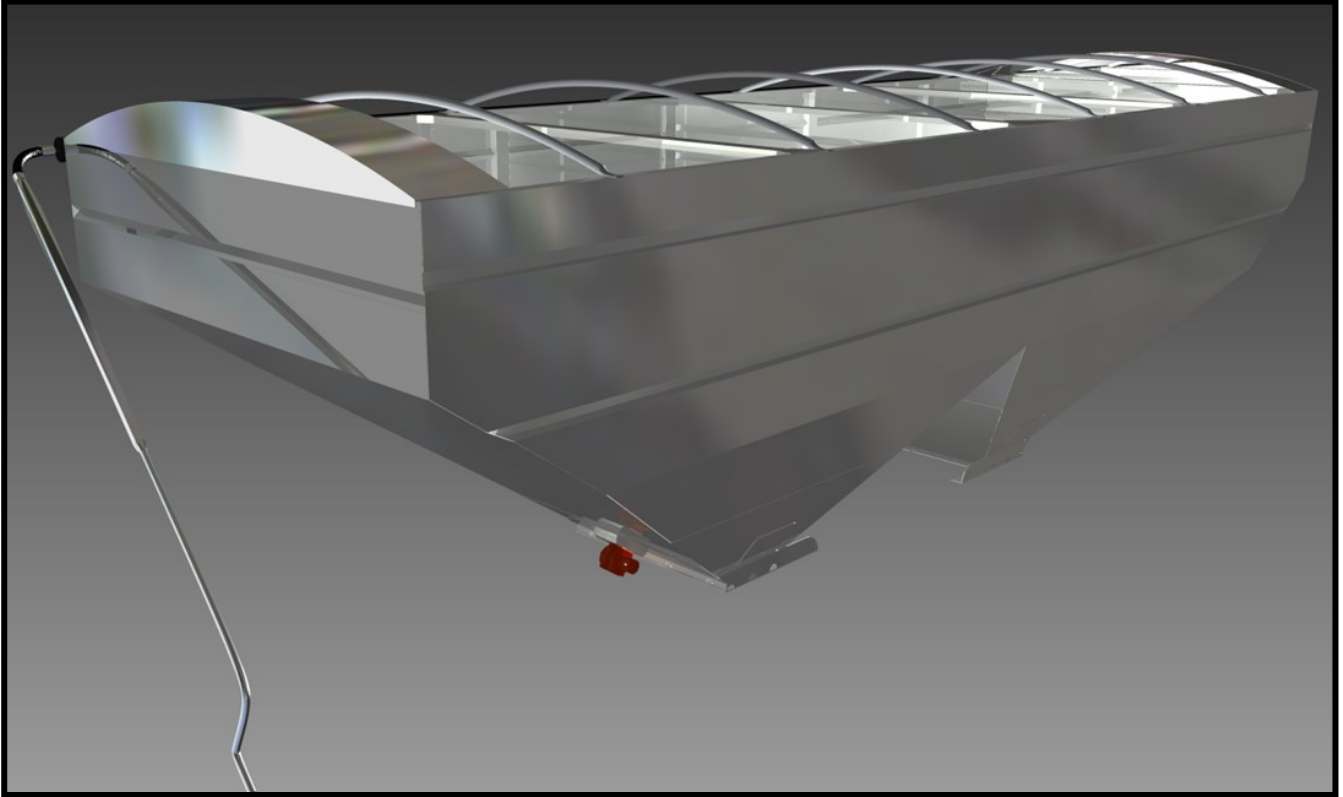
Jost 50,000 lb. Landing Gear  
 Oversized Sandshoes  
 25,000 lb. 10 Hole Uni-mount Axles  
 CH9700US Hutch Cast Suspension  
 3 Leaf HDHA Springs  
 255 70 R 22.5 Tire Size  
 8.25 x 22.5 Steel Disc Wheels  
 ABS Brake System  
 Auto Slacks  
 Grote Sealed light kit  
 Rear Poly Fenders

Deutz Diesel Engine  
 20 Gallon Fuel Tank  
 70 Gallon Hydraulic Tank  
 Heavy Duty Hydraulic System  
 Hydraulic Hose Kit - All Hose  
 Hydraulic Main Doors and Cleanout Doors  
 Hydraulic Vibrators  
 Hydraulic Belly Auger & Hydraulic Discharge Auger  
 Hydraulic Discharge Auger Lift

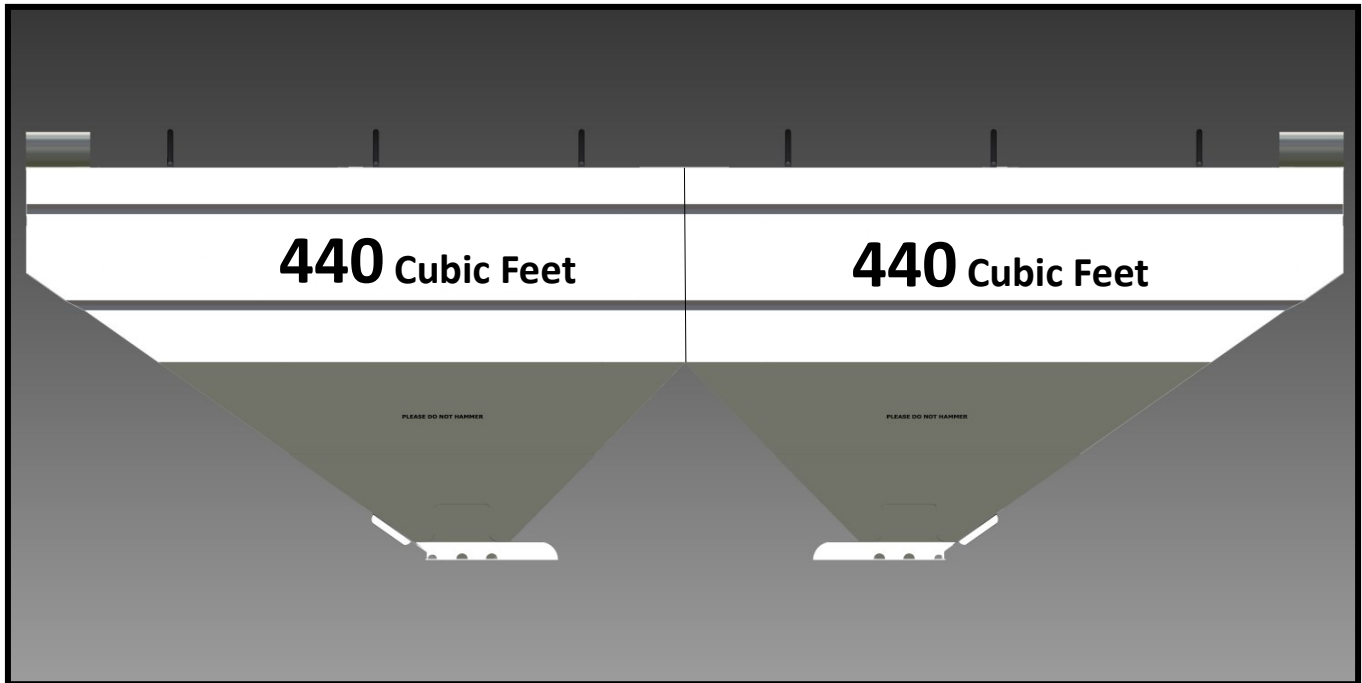
Stainless Steel Hopper (type 304)  
 Stainless Steel 10" Belly Auger (type 304)  
 Stainless Steel 10" Discharge Auger (type 304)  
 Stainless Steel Auger Flighting and Pipe (type 304)  
 Stainless Steel Hopper Grates (type 304)

Agri Cover Tarp System  
 Epoxy Primer and Urethane Paint System

# 24T-2C Hopper



# 24T-2C Hopper Capacity



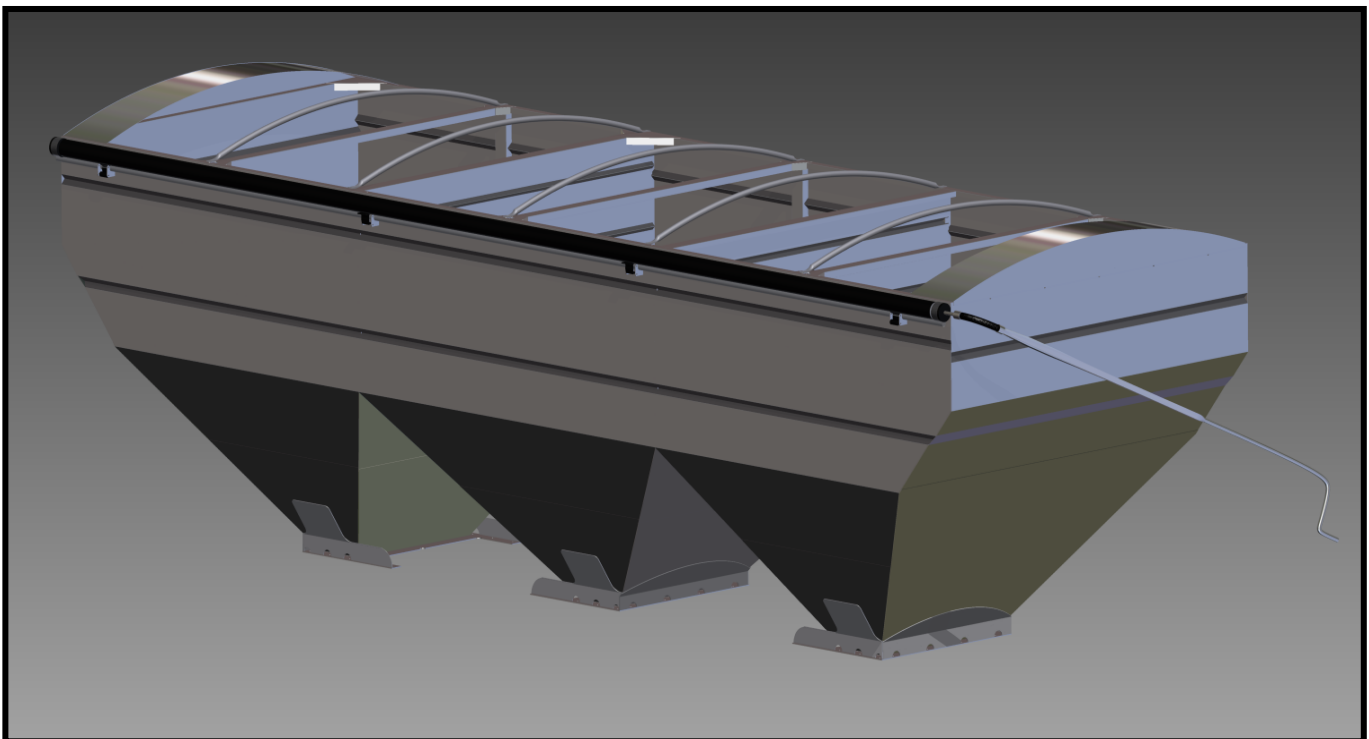
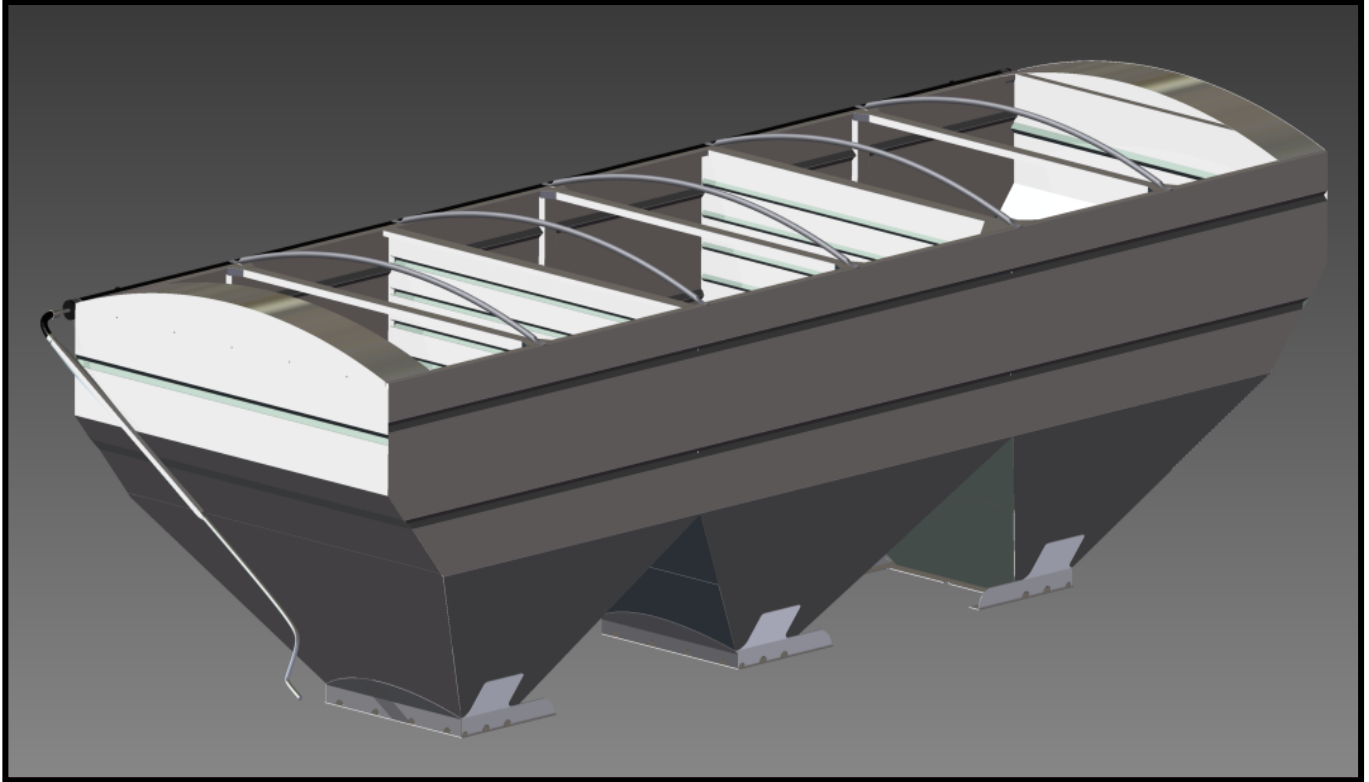
Hopper Capacity	50 lbs per cubic foot	55 lbs per cubic foot	60 lbs per cubic foot	65 lbs per cubic foot	70 lbs per cubic foot
440 cubic feet	22000 lbs / 11 Tons	24200 lbs / 12.1 Tons	26400 lbs / 13.2 Tons	28600 lbs / 14.3 Tons	30800 lbs / 15.4 Tons
880 cubic feet (Total Capacity)	44000 lbs / 22 Tons	48400 lbs / 24.2 Tons	52800 lbs / 26.4 Tons	57200 lbs / 28.6 Tons	61600 lbs / 30.8 Tons

**Weight Laws vary from State to State.**

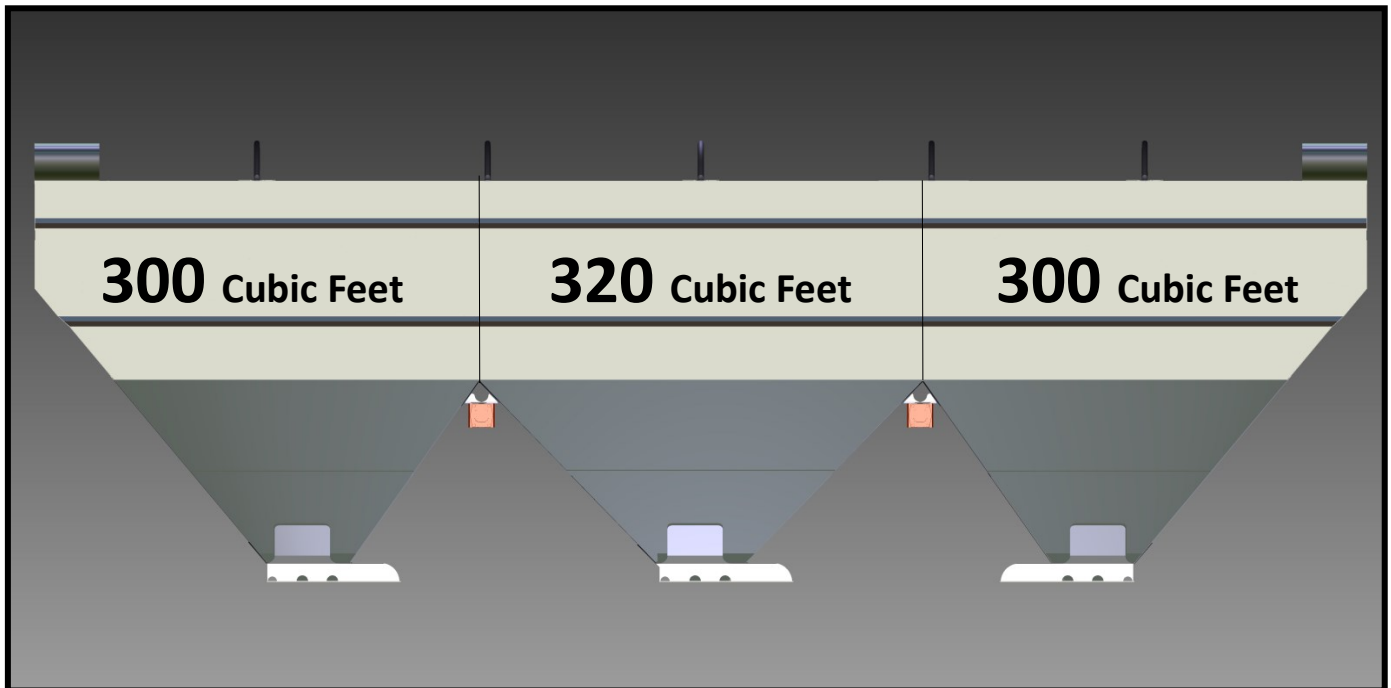
**PLEASE FOLLOW ALL STATE AND FEDERAL DOT REGULATIONS.**

**Do not overload hopper.**

# 24T-3C Hopper



# 24T-3C Hopper Capacity

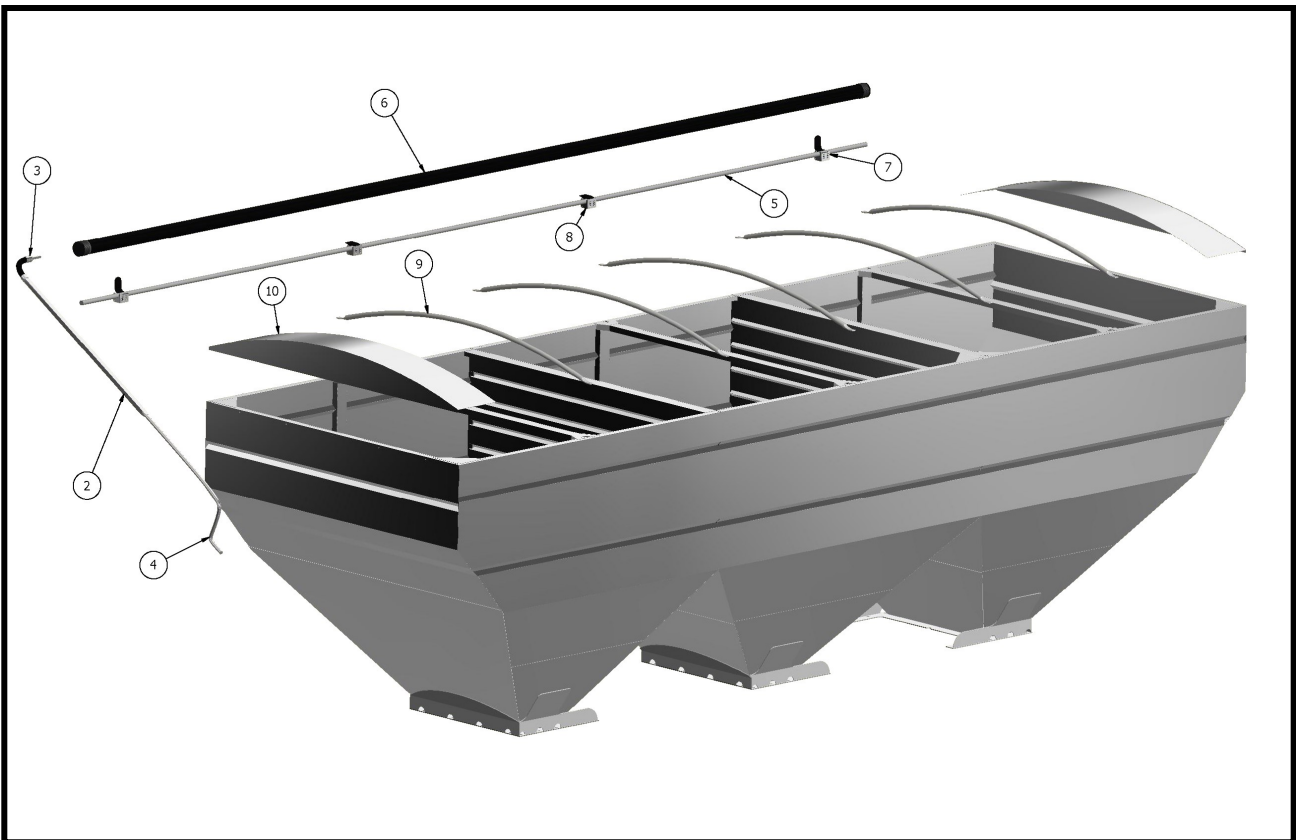
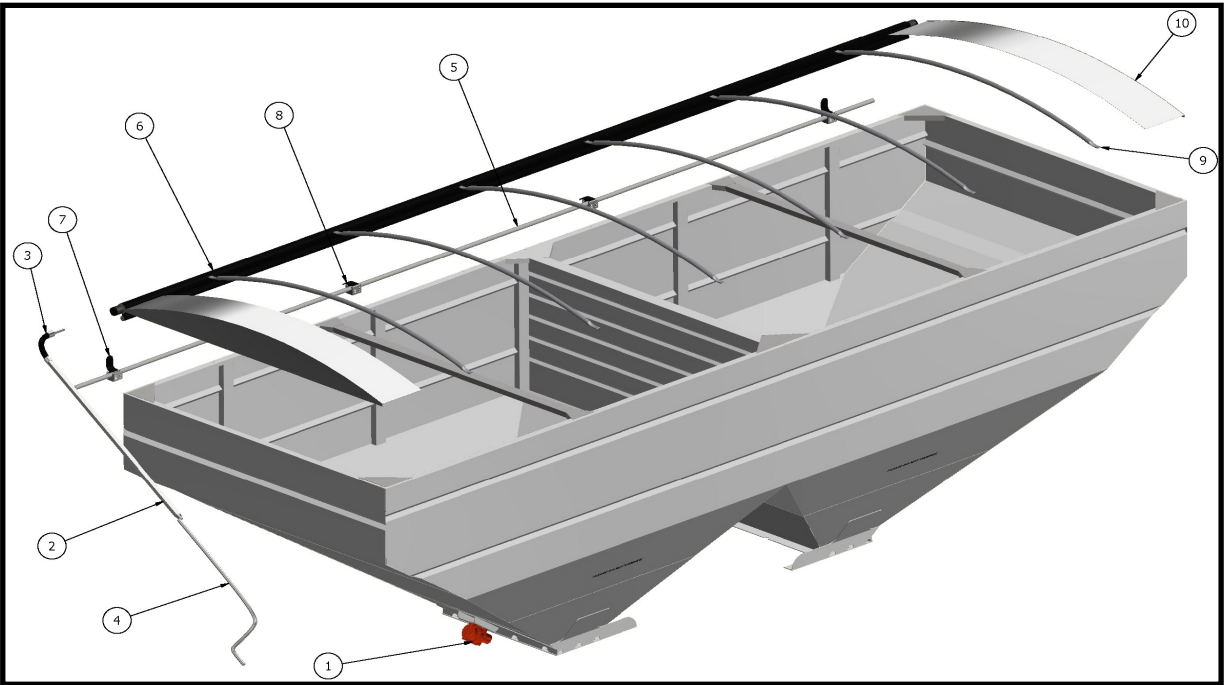


Hopper Capacity	50 lbs per cubic foot	55 lbs per cubic foot	60 lbs per cubic foot	65 lbs per cubic foot	70 lbs per cubic foot
300 cubic feet	15000 lbs / 7.5 Tons	16500 lbs / 8.25 Tons	18000 lbs / 9 Tons	19500 lbs / 9.75 Tons	21000 lbs / 10.5 Tons
320 cubic feet	16000 lbs / 8 Tons	17600 lbs / 8.8 Tons	19200 lbs / 9.6 Tons	20800 lbs / 10.4 Tons	22400 lbs / 11.2 Tons
920 cubic feet (Total Capacity)	46000 lbs / 23 Tons	50600 lbs / 25.3 Tons	55200 lbs / 27.6 Tons	59800 lbs / 29.9 Tons	64400 lbs / 32.2 Tons

**Weight Laws vary from State to State.**

**PLEASE FOLLOW ALL STATE AND FEDERAL DOT REGULATIONS.**

**Do not overload hopper.**

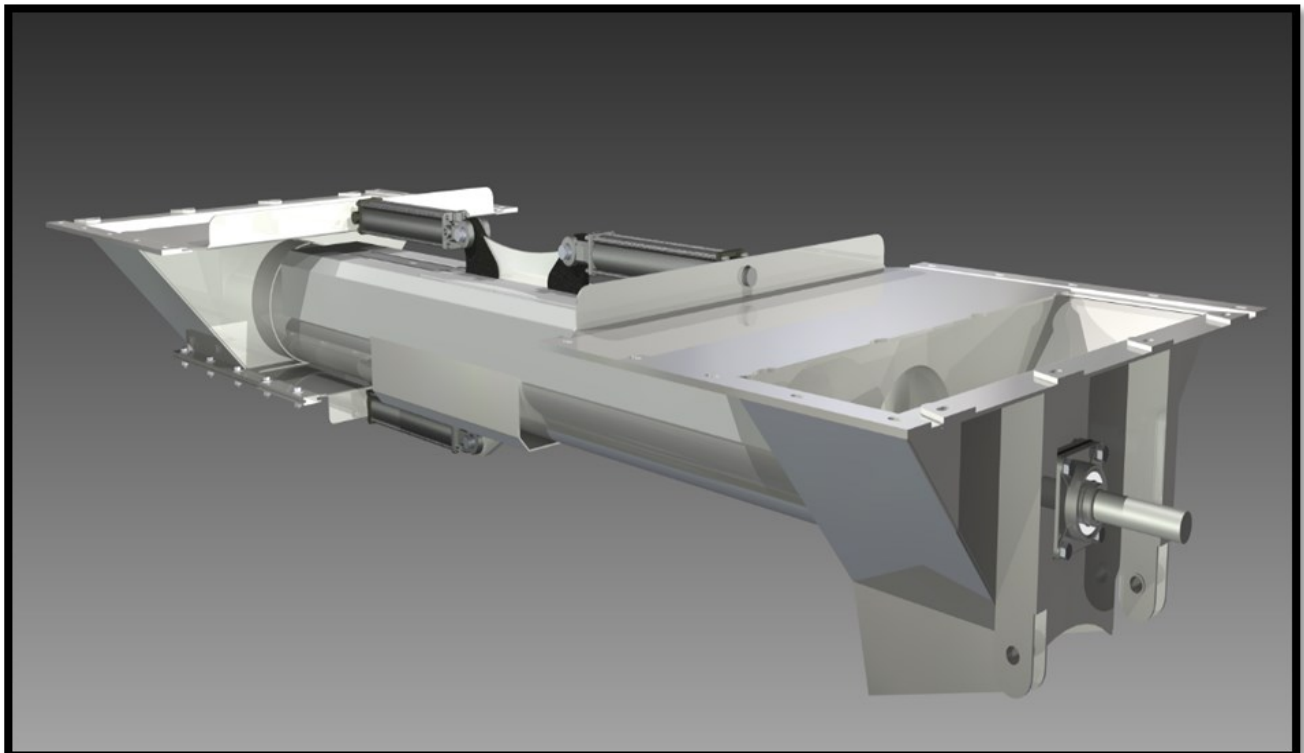
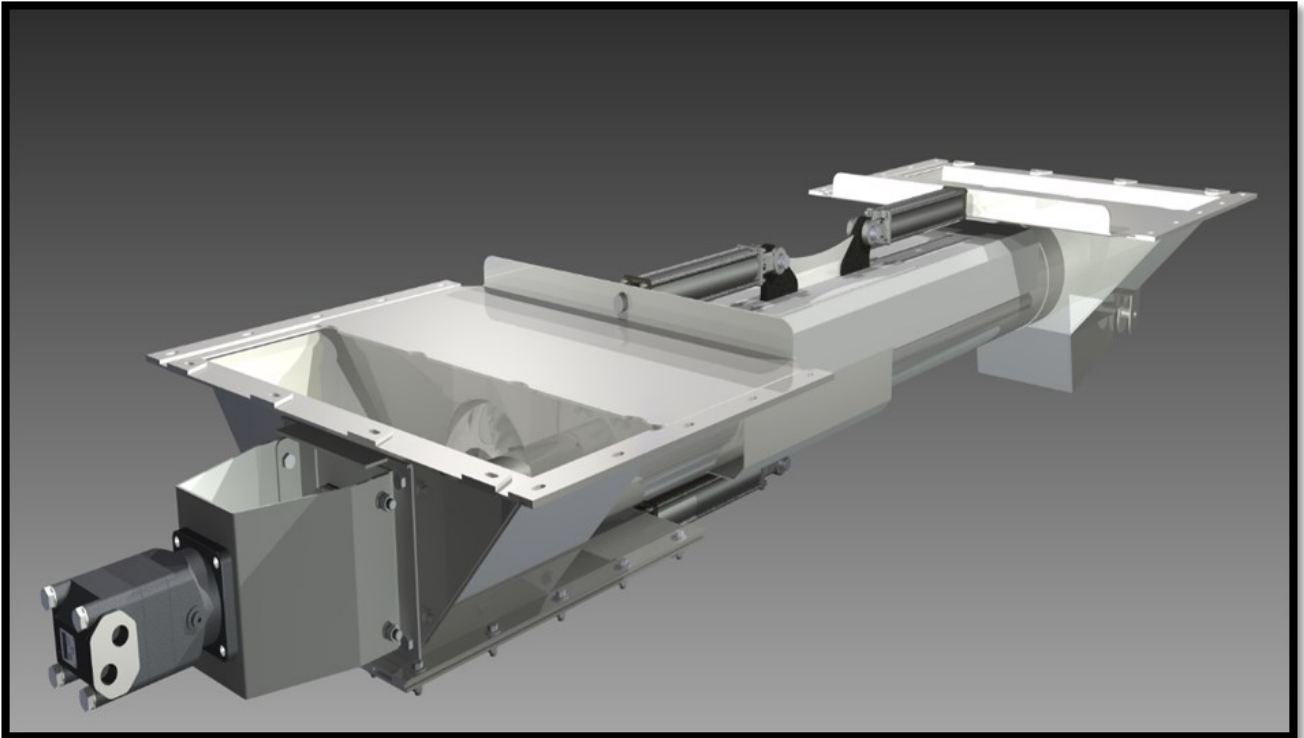




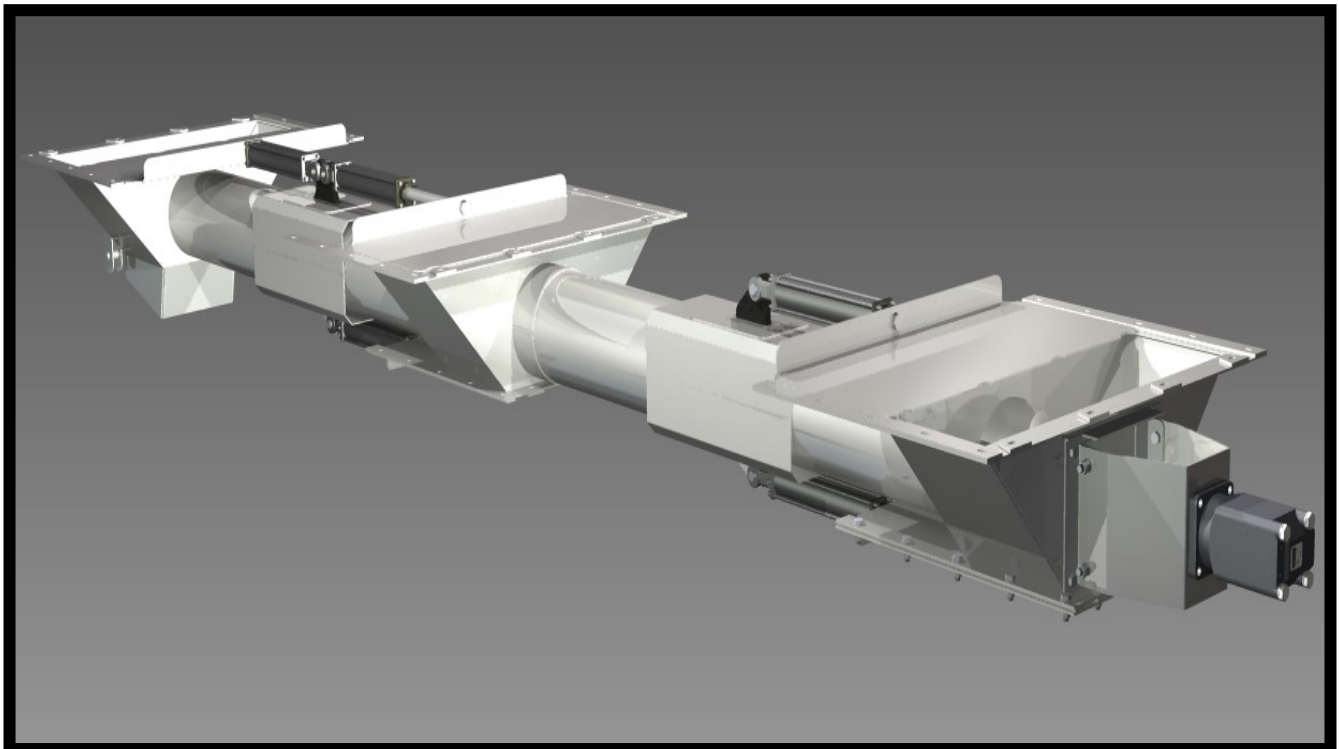
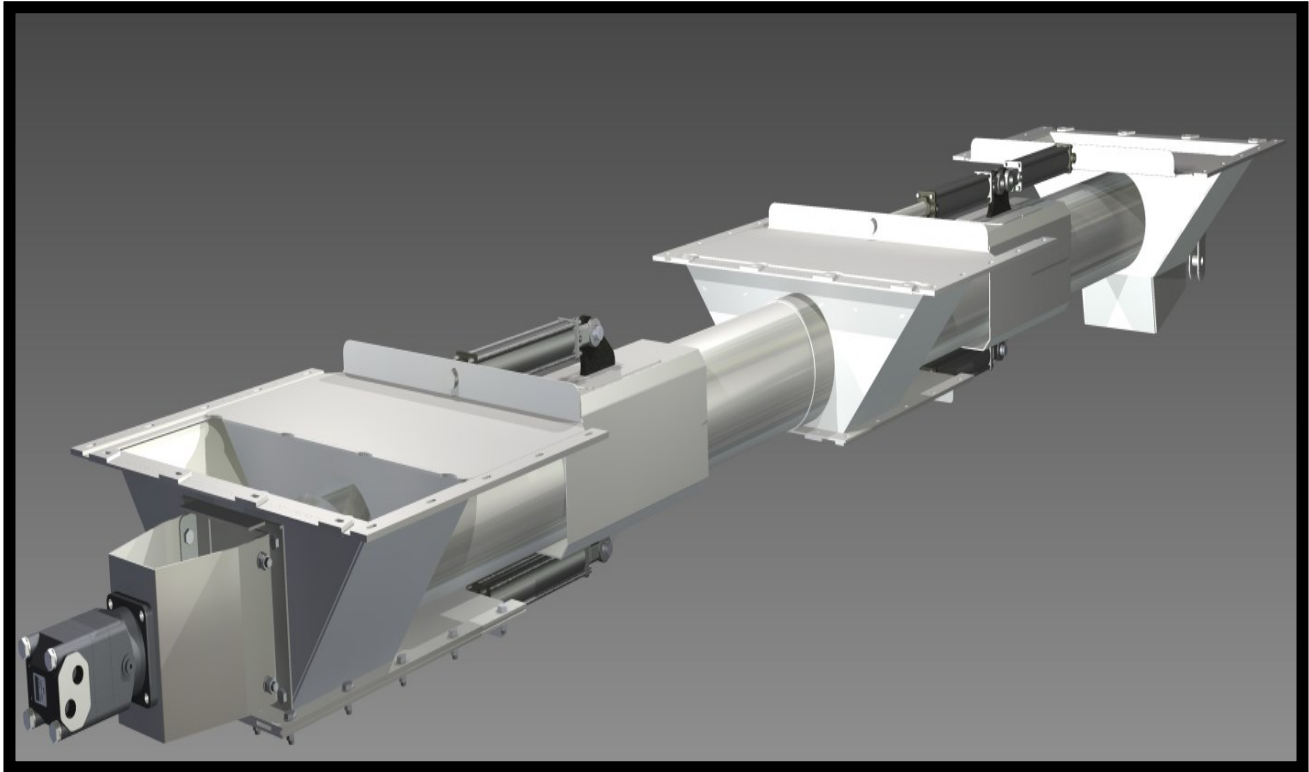
# Hopper and Tarp Parts

#	Part #	Description
	TSC60	Tarp Kit-Agri Cover - 96 X 288 SST STD Man Black ( 24 Feet )
	TSC65	Motor Kit-Agri Cover-SRT-2A Stainless
	TSC70	Hardware Kit-Sealed Toggle-Agri Cover
1	HSP345	Vibco-Hydraulic Vibrator
2	TSC135	Agri Cover-Tarp Handle-Flex Drive
3	TSC140	Agri Cover-Flex Drive Only
4	TSC145	Agri Cover-Tarp Handle Only
	TSC130	Agri Cover- Tarp Canvas
5	TSC155	Agri-Cover- Stay Pipe Kit
6	TSC80	Agri Cover-Roll Pipe Kit
	TSC160	Agri-Cover- Tarp Stop Clevis Pin
7	TSC165	Agri-Cover- Tarp Stop Tall Leg w/hardware
8	TSC170	Agri-Cover- Tarp Stop No Leg w/hardware
	TSC85	Agri Cover-Spool Cables
	TSC90	Agri Cover-3" Nylon Spools- Left Front
	TSC95	Agri Cover-3" Nylon Spools-Right Front
	TSC75	Agri Cover-Tension Ratchets
	TSC125	Agri Cover- Ratchet Strap-Strap Only
	TSC115	Agri Cover- Ratchet Assy w/ Adj. SS Bracket, short strap & SS hook
	TSC100	Agri Cover-O Ring Kit
	TSC105	Agri Cover-Front Spring
	TSC110	Agri Cover-Rear Spring
9	TSC150	Agri-Cover- Tarp Bows w/extension
	TSC180	Agri-Cover- Ridge Strap
10	TSC185	Agri-Cover- End Cap-SS
	OEM600	Hopper 24T 2-C-880-SS 304 (w/o Tarp System and Hopper Grates)
	OEM650	Hopper 24T 3-C-920-SS 304 (w/o Tarp System and Hopper Grates)
	OEM275	Hopper Grates-Stainless Steel-Hays 24T

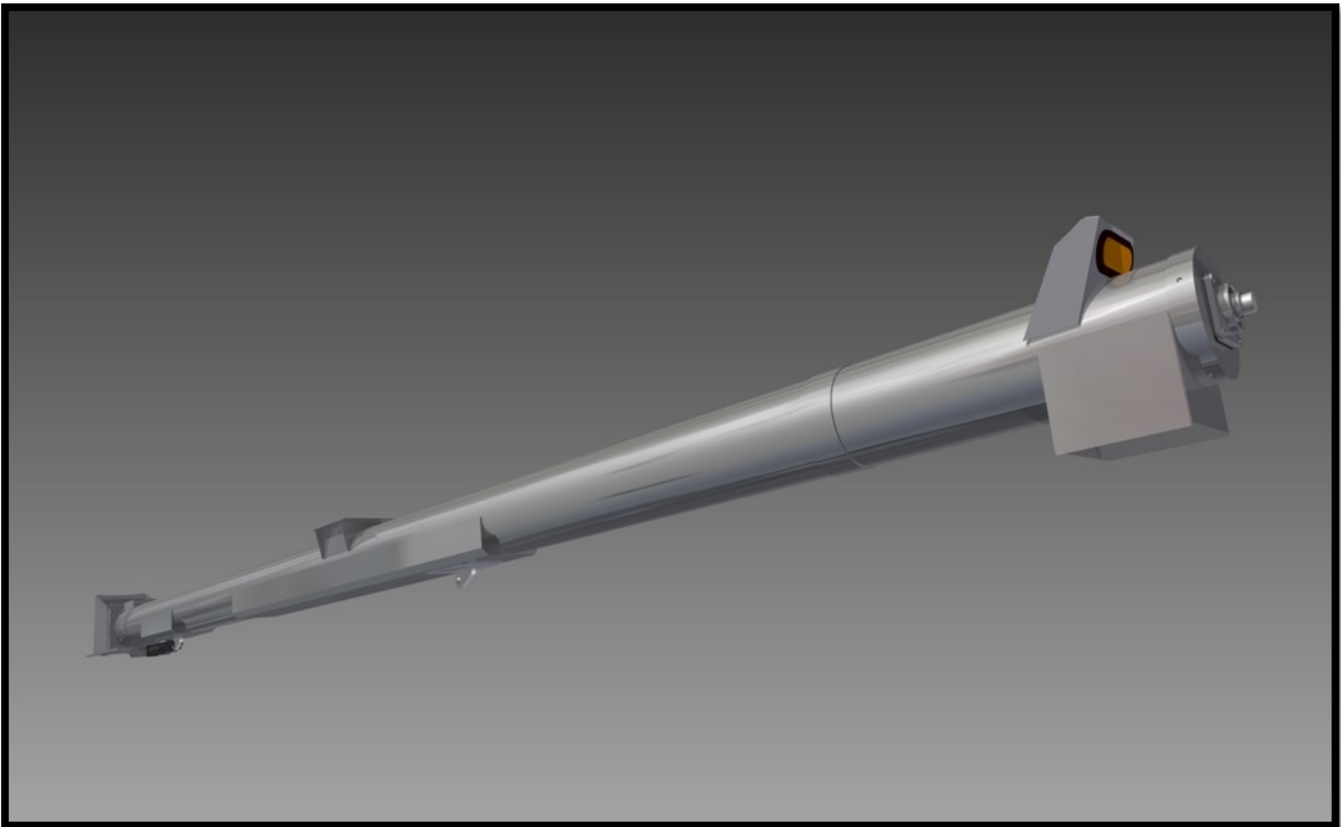
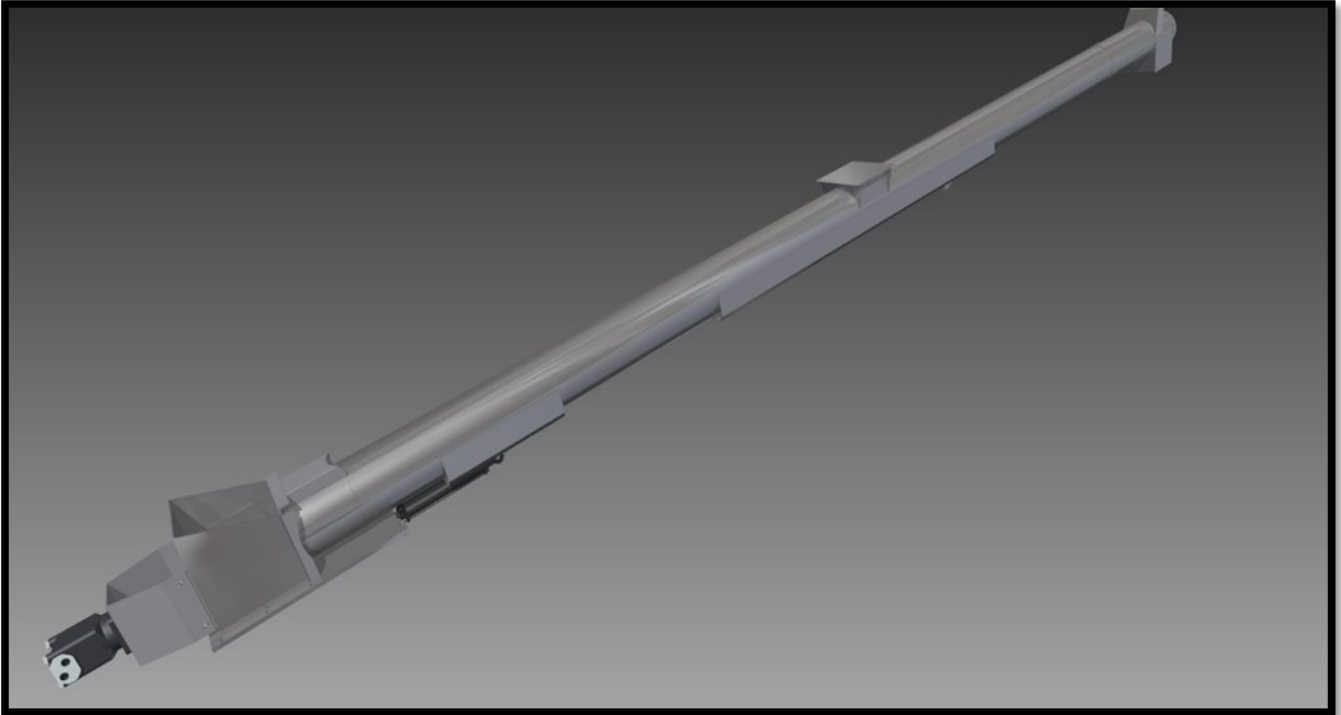
# 2C-Belly Auger



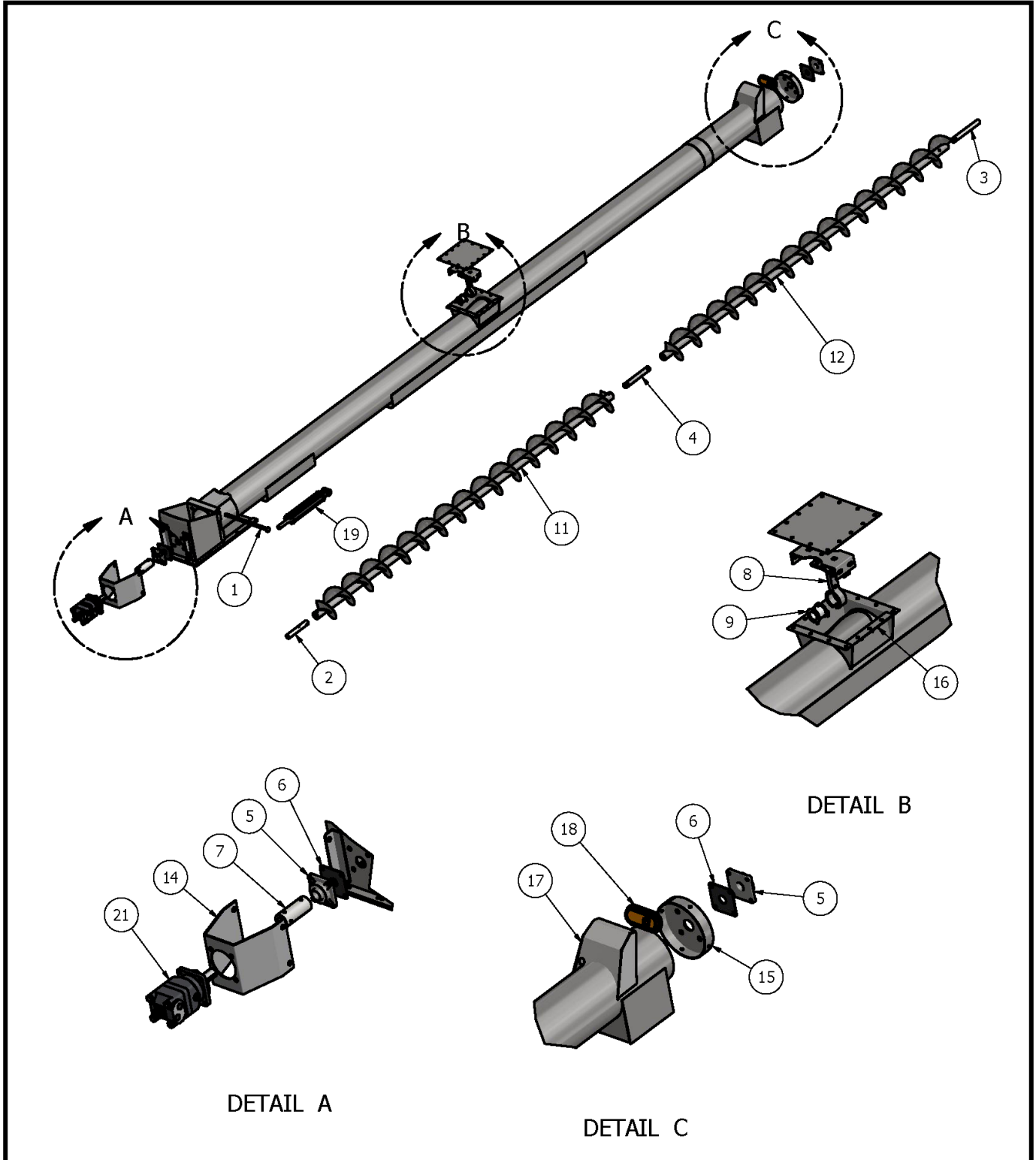
# 3C-Belly Auger



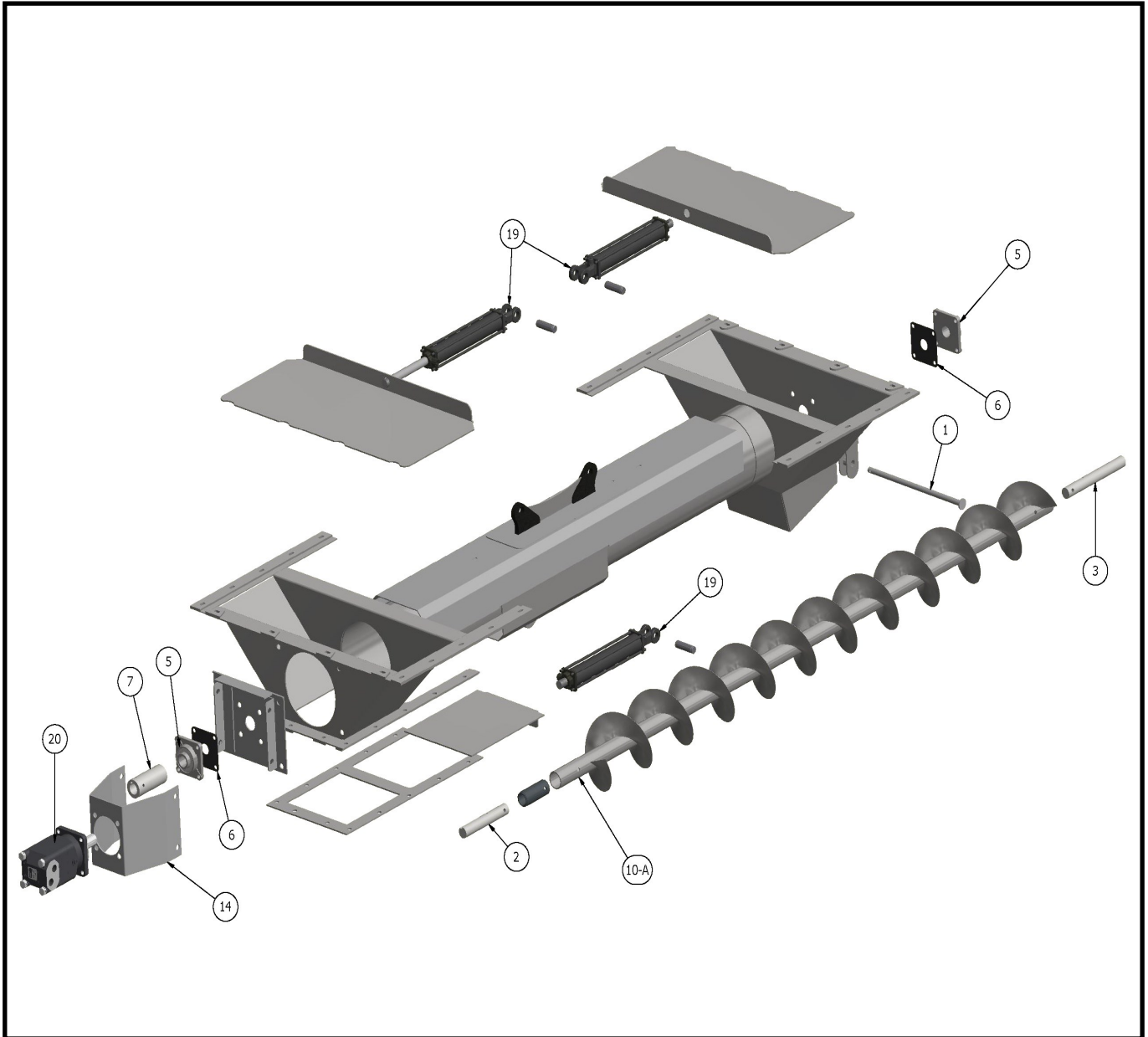
# Discharge Auger



# Discharge Auger



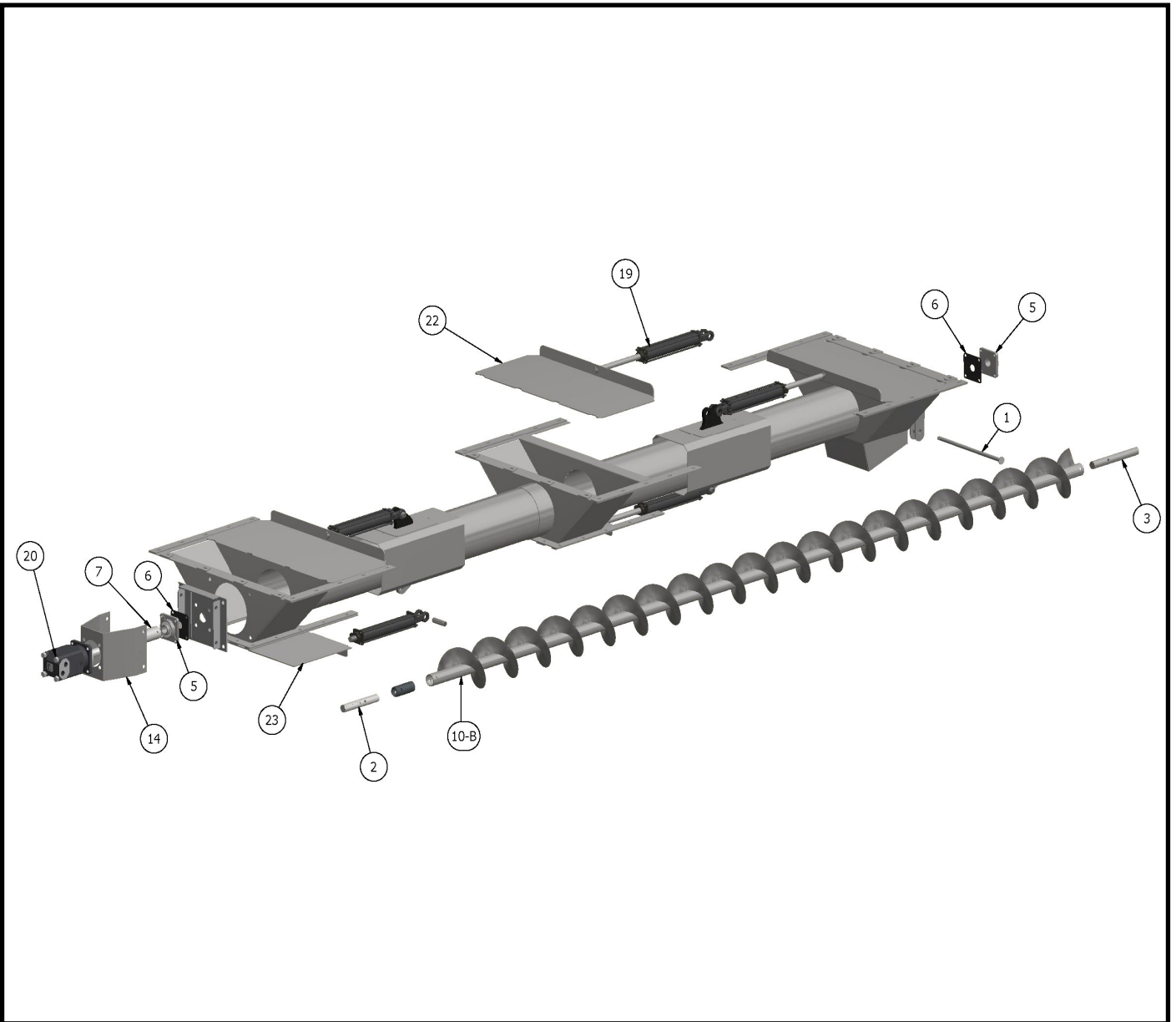
# 2C-Belly Auger



To learn more about our family and our company please visit [www.hayslti.com](http://www.hayslti.com) and watch our video

***"The Hays Difference"***

# 3C-Belly Auger



To learn more about our family and our company please visit [www.hayslti.com](http://www.hayslti.com) and watch our video

*"The Hays Difference"*

# Auger System

	Part #	Description
	AC160	Discharge Auger Assembly-SS Tube, SS Screw, SS Brgs, CO Door & Cylinder-2C
	AC161	Discharge Auger Assembly-SS Tube, SS Screw, SS Brgs, CO Door & Cylinder-3C
	AC162	Belly Auger Assembly-SS Tube, SS Screw, SS Brgs, CO Door & Cylinder-2C
	AC163	Belly Auger Assembly-SS Tube, SS Screw, SS Brgs, CO Door & Cylinder-3C
1	AC165	DA Pivot Pin-3/4 x SS
2	AC05	Drive Shaft
3	AC10	Tail Shaft
4	AC15	Coupling Shaft
5	AC20	Bearing-1 1/2" 4 Bolt Flange
5	AC25SS	Bearing-1 1/2" 4 Bolt Flange-Stainless Steel
5	AC30POLY	Bearing-1 1/2" 4 Bolt Flange-POLY Thermo Plastic
6	AC35	Gasket-4 Bolt Flange Bearing
7	AC40	Motor Shaft Coupling
	AC45SS	Set Screws 3/8 x 1 SS 18-8
	AC50	Set Screws 3/8 x 1
	AC55	Keystock 3/8 x 6
8	AC60	Hanger Kit
9	AC65	Nylon Hanger Bearing
9	AC70	Nylon Hanger Bearing (UHMW)
10-A	AC75	Belly Auger-106" 2-C-Mild Steel
10-B	AC76	Belly Auger- 180" 3-C-Mild Steel
11	AC80	Discharge Auger-Lower-144"
12	AC85	Discharge Auger-Upper-138"
10-A	AC90SS	2C-Belly Auger-106"-Stainless Steel
10-B	AC91SS	3C-Belly Auger-180" Stainless Steel
11	AC95SS	Discharge Auger-Lower-144"-Stainless Steel
12	AC100SS	Discharge Auger-Upper-138"-Stainless Steel
	AC105	1/2 x 3 Hex Cap Screw-SS 18-8
	AC110	1/2 Hex Nut-SS 18-8

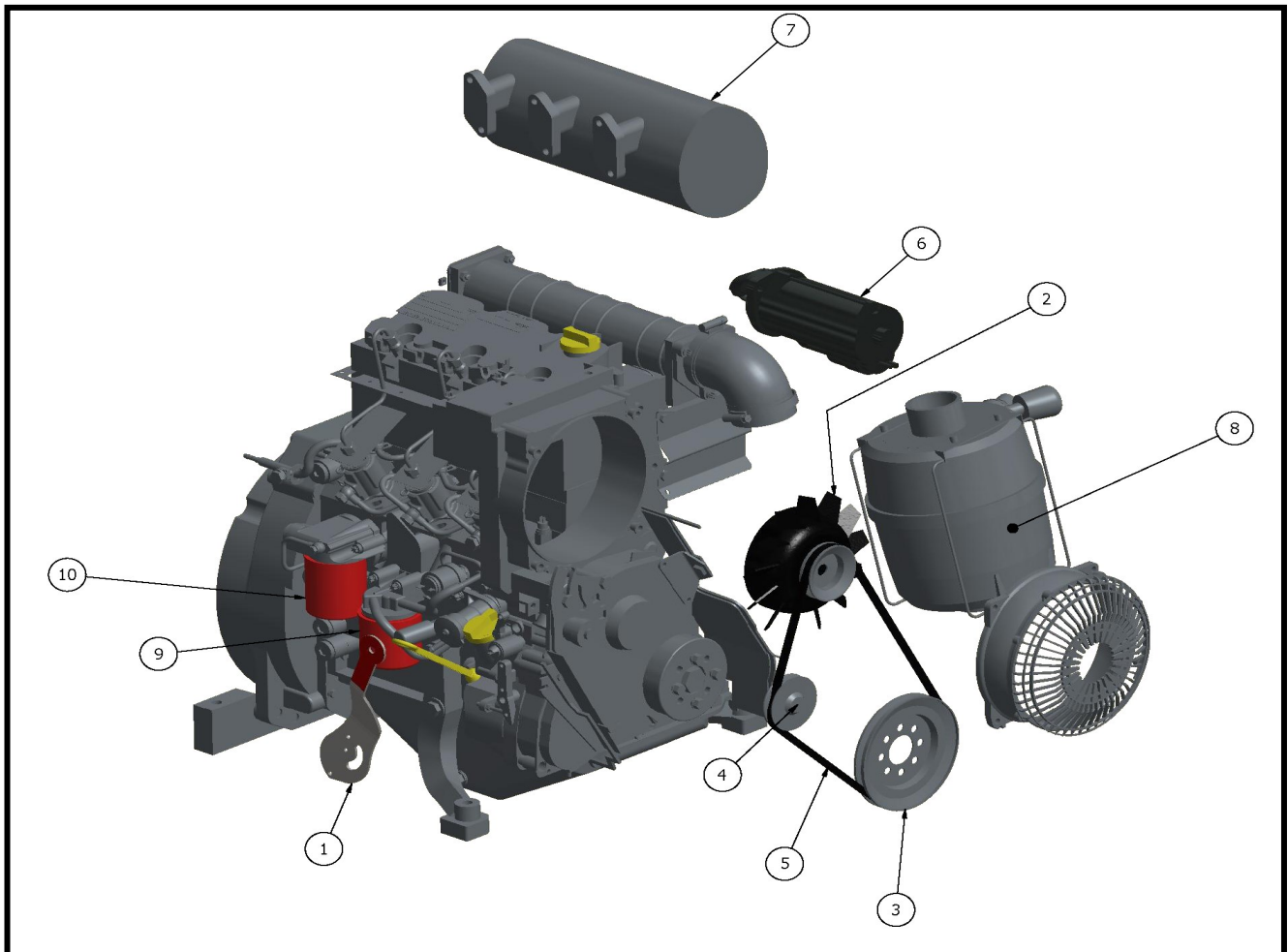
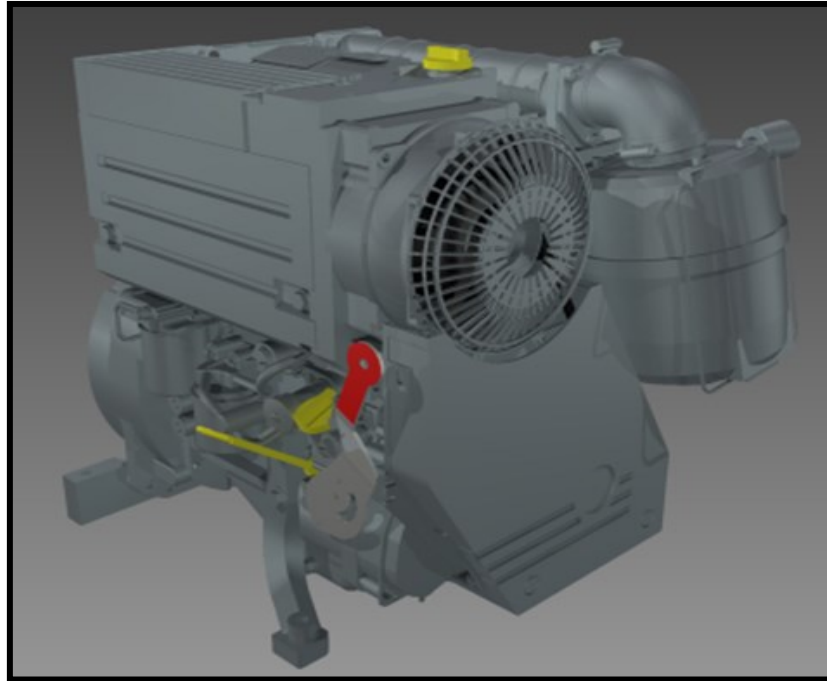


# Auger System

	<b>Part #</b>	<b>Description</b>
	AC115	1/2 Lock Washer-SS 18-8
	SS75	2 SS Pipe sch40
	AC135	Collar-Internal Screw Pipe
	AC140SS	Intake Lug-RH-Stainless Steel
	AC145SS	Discharge Lug-RH-Stainless Steel
	AC150	Intake Lug-RH-Carbon
	AC155	Discharge Lug-RH-Carbon
	AC175	DA 10" x 10" SS Collar
	SS80	10" x 12ga SS Tube-Per Foot
13	AC181	DA Hopper Box w/CO Door Assembly
14	AC182	Motor Mount-.188 SS 304
15	AC183	DA End Cap-SS 304
16	AC180	DA Inspection/Center Brg Box-SS
17	OEM45	Strobe Light Bracket-SS
18	LWD180	Lights, Oval Strobe Light
	LWD200	Lights, Oval Grommet
	AC170	Warning Red Flags 18x18
19	HSP245	2 x 12 Hydraulic Cylinder Tie-rod
	BNWSS665	1 1/8 Hex Jam Nut-SS 18-8
	HSP260	2 1/2 x 36 Hydraulic Cylinder-Welded
20	HSP280	Hydraulic Motor-Belly Auger-24T
21	HSP285	Hydraulic Motor-Discharge Auger-24T
22	OEM281	Hopper Main Door-SS-24T
23	OEM282	Hopper Clean Out Door-SS-24T

	HHF726	Central Lube Kit-618-02 1/8-90"-134"-134"-414"-24T
	HHF726-1	1/8 x 90" P02-04FJ/P02-04FJ
	HHF726-2	1/8 x 134" P02-04FJ/P02-04FJ 2-Required
	HHF726-3	1/8 x 414" P02-04FJ/P02-04FJ
	HHF726-4	Bulkhead 4-Required
	HHF726-5	Grease Fitting 1/8 MPT 4-Required

# Deutz Engine



# Engine Parts

	Part #	Description
	EEC180	Deutz-Engine D2011L03I-7449
	EEC183	Deutz-Deep Sea Control Panel
	EEC381	Deutz-Cable Remote Valve Shift-96"-Throttle
1	EEC285	Deutz- Hand Speed Control
	EEC234	Deutz-12V 75A Starter Relay
	EEC235	Deutz-12VDC Fuel Relays
2	EEC185	Deutz-Generator 14V 60A
3	EEC310	Deutz-V Grooved Pulley-4176260
4	EEC316	Deutz-Tension Pulley
5	EEC320	Deutz-Narrow V-Belt-1179565
6	EEC250	Deutz-Starter-410-24030-BR
	EEC275	Deutz-Solenoid Switch
7	EEC200	Deutz-Exhaust Silencer-4191474
	EEC205	Deutz-Gasket Exhaust-4173862
	EEC210	Deutz-Hex Nut Exhaust-1148960
	EEC215	Deutz-Stud Exhaust-1148961
	EEC220	Deutz-Exhaust Tail Pipe
8	EEC255	Deutz-Air Filter
9	EEC300	Deutz- Fuel Filter
10	EEC305	Deutz-Oil Filter-1174416
	EEC222	Deutz-Temp Transmitter
	EEC230	Deutz-Pressure Sensor-1182841
	EEC325	Deutz-Fuel Supply Pump-New Models
	EEC260	Deutz-Fuel Line
	EEC382	Deutz-Fuel Line
	EEC265	Deutz-Oil Pilot Line
	EEC262	Deutz-Oil Drain Hose Assembly
	EEC295	Deutz-Cooling Air duct
	TH75	Diesel Tank-Poly
	TH80	Diesel Tank Cap w/Gauge
	TH76	Diesel Tank Strap-SS
	TH60	Battery Box
	TH50	12V Battery (Large)

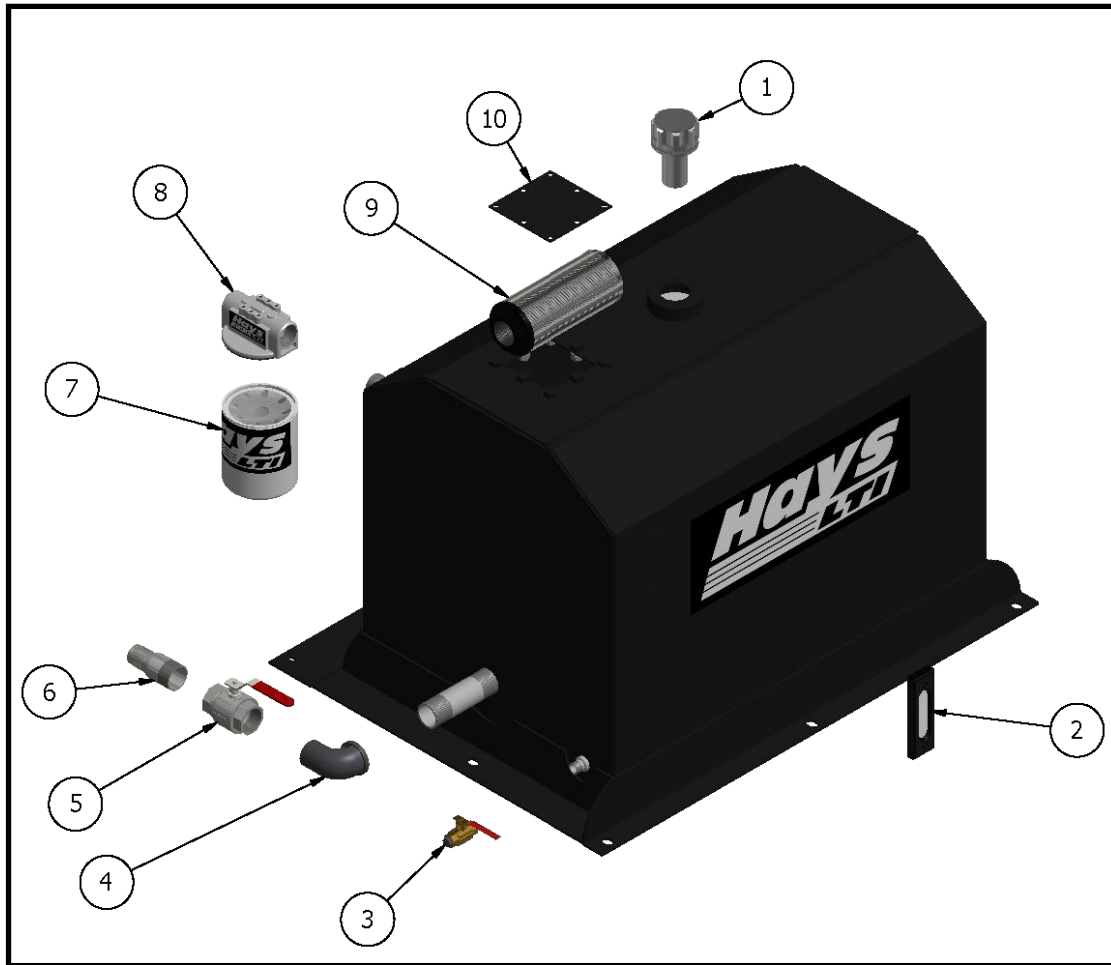
# Hydraulic System

HSP10	Hydraulic Reservoir-24T Tender
HSP15	Hydraulic Reservoir-24T Tender w/ all components
HSP45	Hydraulic Oil
HSP20	Reservoir Fluid Level Gauge/Thermometer
HSP25	Reservoir Filler Breather
HSP365	Low Pressure Ball Valve-1 1/2" N.P.T. Threads
HSP380	Sump Strainer-1 1/2" 100 mesh
HSP386	Oil Filter Base-24T
HSP385	Oil Filters-24T
HSP275	Hydraulic Pump-24T
HSP280	Hydraulic Motor-Belly Auger-24T
HSP285	Hydraulic Motor-Discharge Auger-24T
HSP325	Cross-Door Valve- 24T
HSP330	Cross-BA/ DA Raise Valve- 24T
HSP335	Cross-DA Valve-24T
HSP340	Cross-Vibrator Valve-24T
HSP100	Cross Valve-Handle Kit
HSP95	Cross Valve-Handle Pin kit-Long
HSP110	Cross Valve-Spring Center Kit
HSP120	Cross Valve-Seal Kit-2 Spool
HSP345	Vibco-Hydraulic Vibrator
HSP290	Hydraulic Pressure Gauge-Rear Center-Panel Mount
HSP245	2 x 12 Hydraulic Cylinder Tie-rod
HSP260	2 1/2 x 36 Hydraulic Cylinder-Welded

## 2-C Hydraulic Hoses

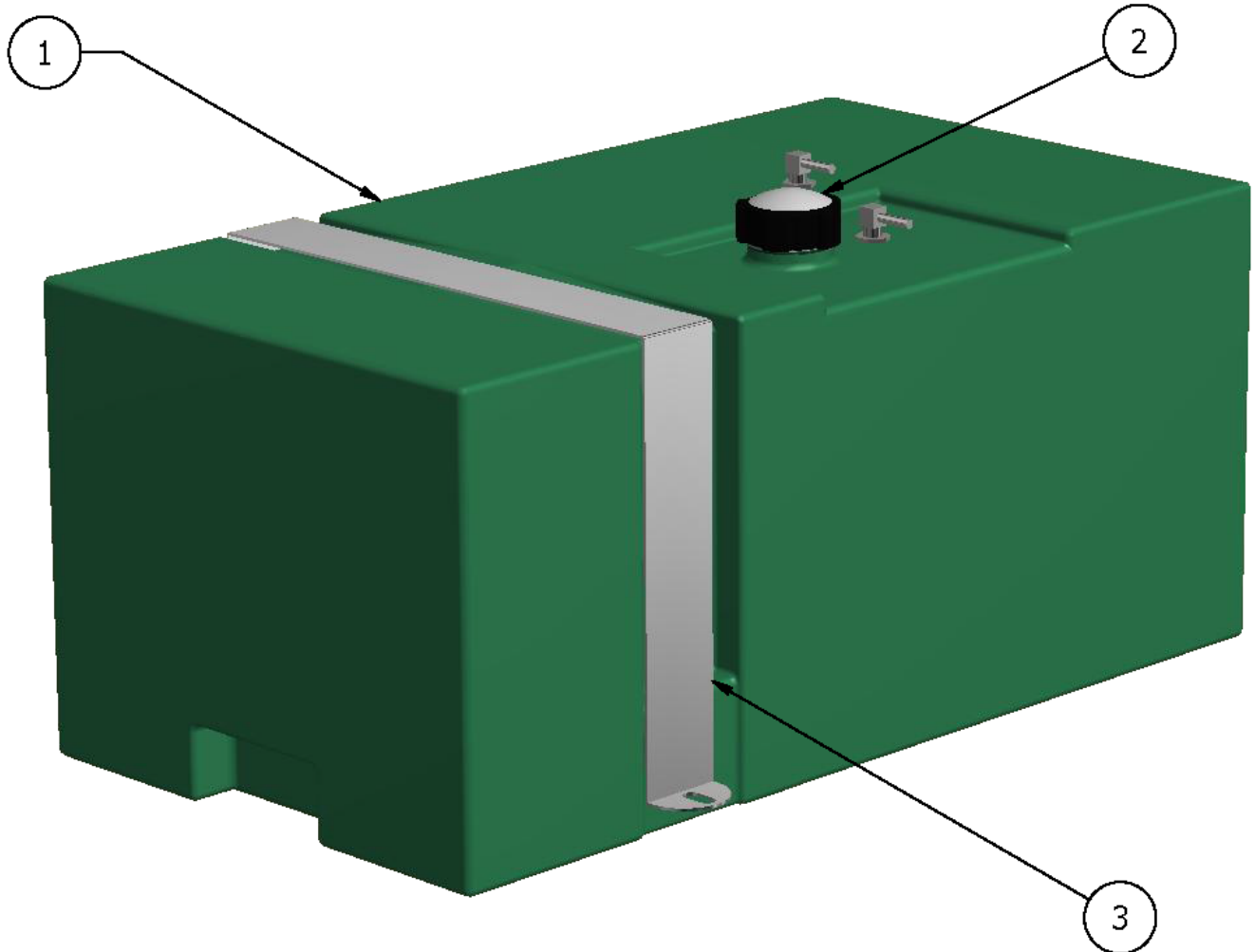
HHF800	Hays 24T Hydraulic Hose Kit
HHF-800-1	1/4 x 18" E04-04FP/E04-04NPX90 2-Required
HHF-800-2	3/8 x 39" E06-06FJ/E06-06FJ 2-Required
HHF-800-3	3/8 x 49" E06-06FJ/E06-06FJ
HHF-800-4	3/8 x 51" E06-06FJ/E06-06FJ 2-Required
HHF-800-5	3/8 x 64" E06-06FJ/E06-06FJ
HHF-800-6	3/8 x 110" E06-06FJ/E06-06FJ 2-Required
HHF-800-7	3/8 x 119" E06-06FJ/E06-06FJ
HHF-800-8	3/8 x 134" E06-06FJ/E06-06FJ
HHF-800-9	3/8 x 169" E06-06FJ/E06-06FJ 2-Required
HHF-800-10	3/8 x 210" E06-06FJ/E06-06FJ
HHF-800-11	3/8 x 253" E06-06FJ/E06-06FJ
HHF-800-12	1/2 x 14" E08-08FJ/E08-08FJ
HHF-800-13	1/2 x 25" E08-08FJ/E08-08FJ
HHF-800-14	1/2 x 32" E08-08FJ/E08-08FJ
HHF-800-15	1/2 x 36" E08-08FJ/E08-08FJ
HHF-800-16	1/2 x 44" E08-08FJ/E08-08FJ
HHF-800-17	1/2 x 210" E08-08FJ/E08-08FJ
HHF-800-18	3/4 x 15" E12-12FJ/E12-12FJ
HHF-800-19	3/4 x 17" E12-12FJ/E12-12FJ
HHF-800-20	3/4 x 60" E12-12FJ/E12-12FJ
HHF-800-21	3/4 x 64" E12-12FJ/E12-12FJ
HHF-800-22	3/4 x 145" E12-12FJ/E12-12FJ 2-Required
HHF-800-23	3/4 x 213" E12-12FJ/E12-12FJ
HHF-800-24	3/4 x 225" E12-12FJ/E12-12FJ
HHF-800-25	1 x 225" E16-12FJ/E16-16FJ

# Hydraulic Reservoir



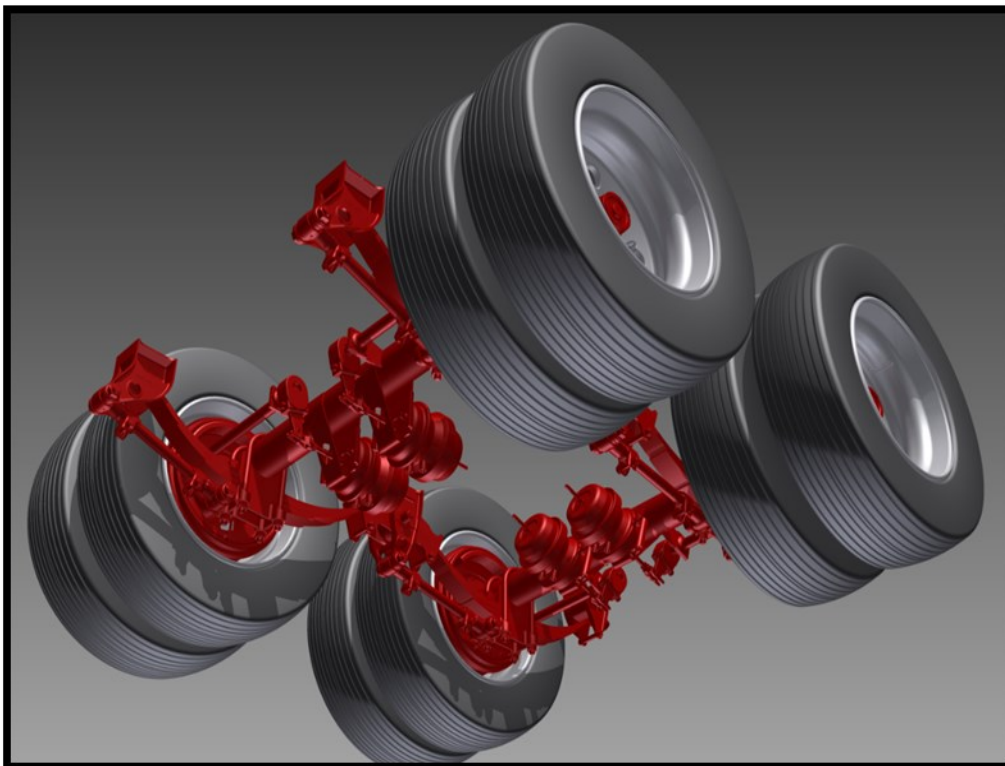
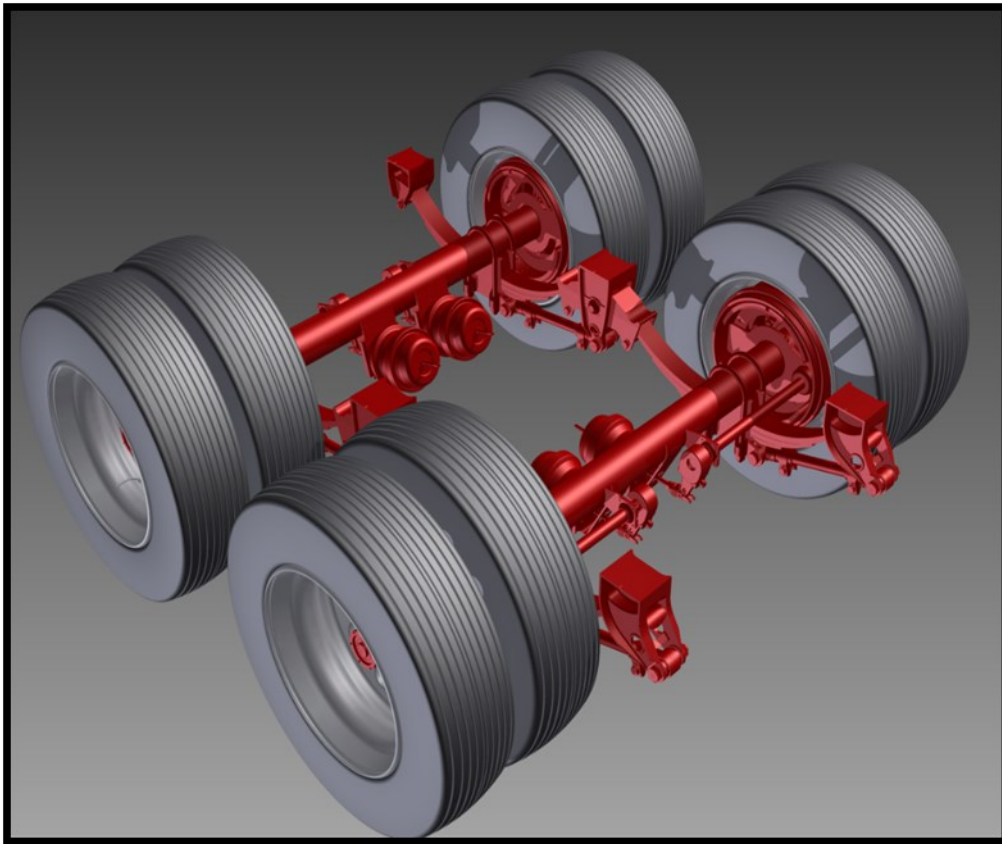
#	Part #	Description
	HSP10	Hydraulic Reservoir-24T Tender
	HSP15	Hydraulic Reservoir-24T Tender complete with all components
	HSP45	Hydraulic Oil
1	HSP25	Reservoir Filler Breather
2	HSP20	Reservoir Fluid Level Gauge/Thermometer
3	PFBI285	1/2 Ball Valve
4	PFBI390	1 1/2 Str Elbow 90 Degree-BI
5	HSP365	Low Pressure Ball Valve-1 1/2" N.P.T. Threads
6	PFBI500	1 1/2 Hose Barb-Straight
7	HSP385	Oil Filters-24T
8	HSP386	Oil Filter Base-24T
9	HSP380	Sump Strainer-1 1/2" 100 mesh
10	HSP16	Inspection Cover

# Fuel Tank



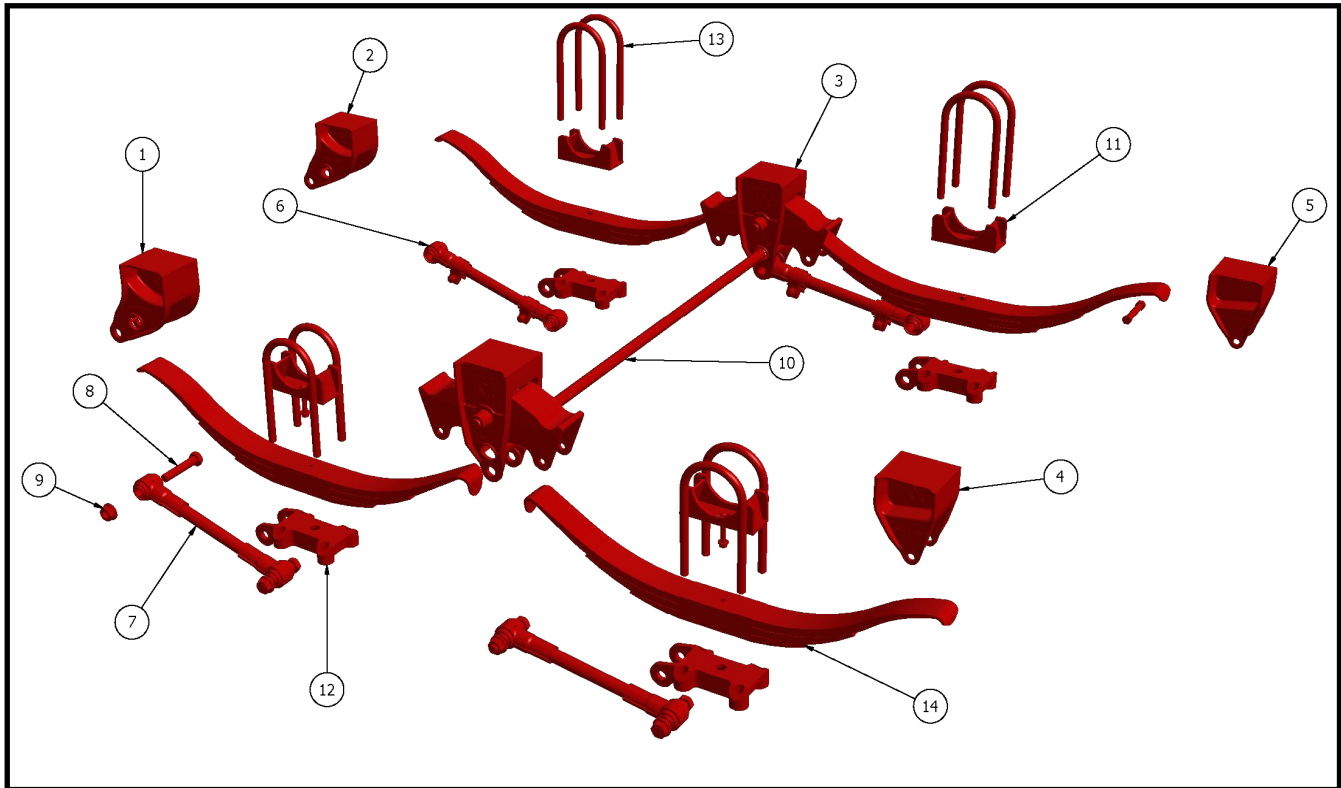
	Part #	Description
1	TH75	Diesel Tank-Poly
2	TH80	Diesel Tank Cap w/Gauge
3	TH76	Diesel Tank Strap-SS

# Axle and Suspension



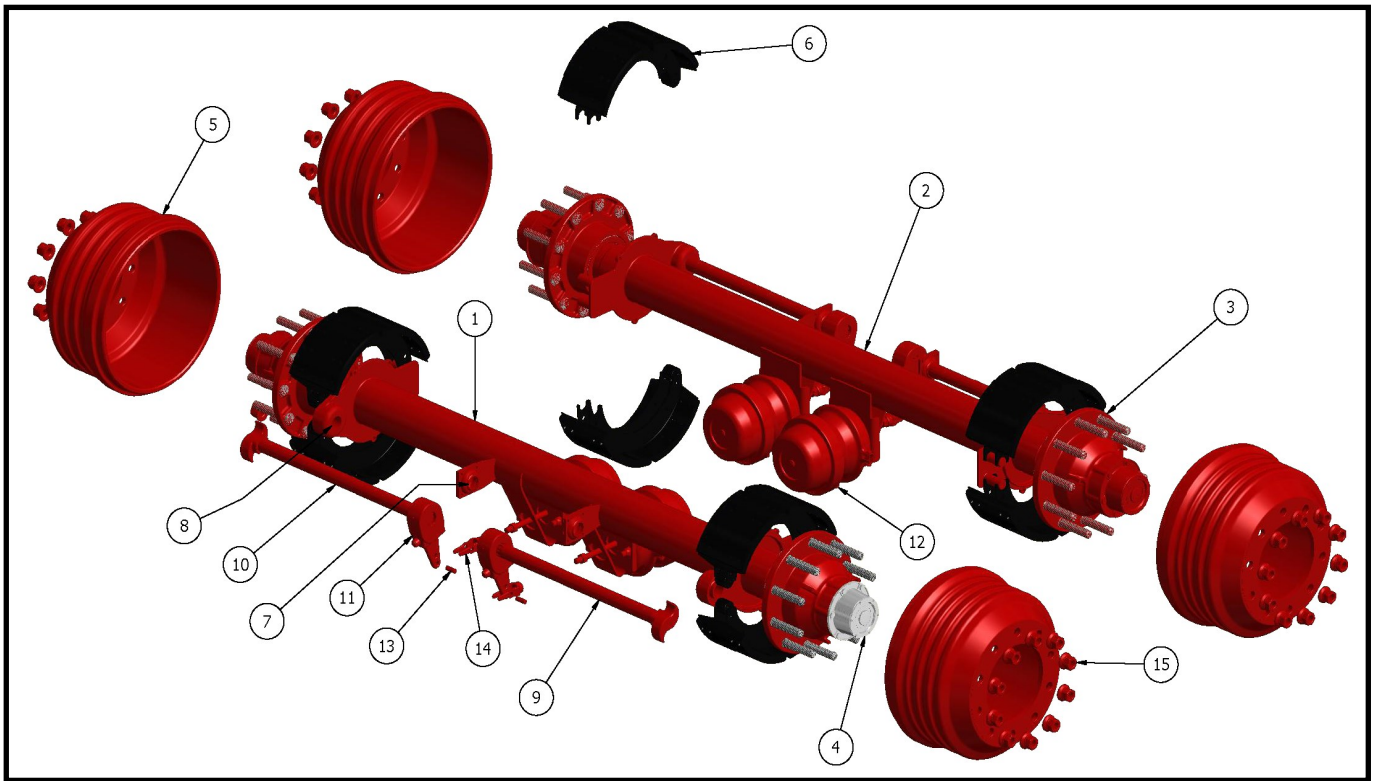


# Suspension



	Part #	Description
	SP225	CH9700T 49 US UN/MT 5RD 7/8 UB 3/4 SS L/3HD/2ST/6LF
1	SP20	Hutch Front Hanger-Cast-LH
2	SP25	Hutch Front Hanger-Cast-RH
3	SP30	Hutch Center Hanger Combo-Cast-UN/S CH9700
4	SP35	Hutch Rear Hanger-Cast-LH
5	SP40	Hutch Rear Hanger-Cast-RH
6	SP45	Hutch Adjustable Torque Arm
7	SP50	Hutch Non-Adjustable Torque Arm
8	SP55	Hutch Torque Arm Bolts
9	SP60	Hutch Torque Arm Nuts
10	SP65	Hutch Cross Pipes (45 x 1 1/4)
11	SP90	Hutch US Spring Seat-5 RD .75 HI
12	SP95	Hutch US Bottom Plate-Cast
13	SP125	U-Bolts 5 x 12 1/4 x 7/8
14	SP160	Spring-3 Leaf -High Arch-Heavy Duty-365-00

# Axle & Brake



1	BAP350	Axle-102-Uni Mount-77.5-30/30
2	BAP355	Axle-102-Uni Mount-ABS-77.5-30/30
3	BAP325	Hub-ABS-10 Hole Uni-Mount-W/Cups
4	BAP185	Hub Cap-6 Hole x 5 1/2 BC
	BAP175	Oil Seals-370025A
	BAP140	Bearing Cone-218248
	BAP145	Bearing Cup-218210
	BAP150	Bearing Cone-212049
	BAP155	Bearing Cup-212011
5	BAP231	Brake Drum-10 Hole-Outboard
	BAP245	Brake Kit-16.5 Rockwell Q
6	BAP235	Linings-Rockwell Q
7	BAP210	Cam Shaft Bracket Repair Kit
8	BAP215	Cam Shaft Outer Bushing Kit
9	BAP220	Cam Shaft-Left
10	BAP225	Cam Shaft-Right

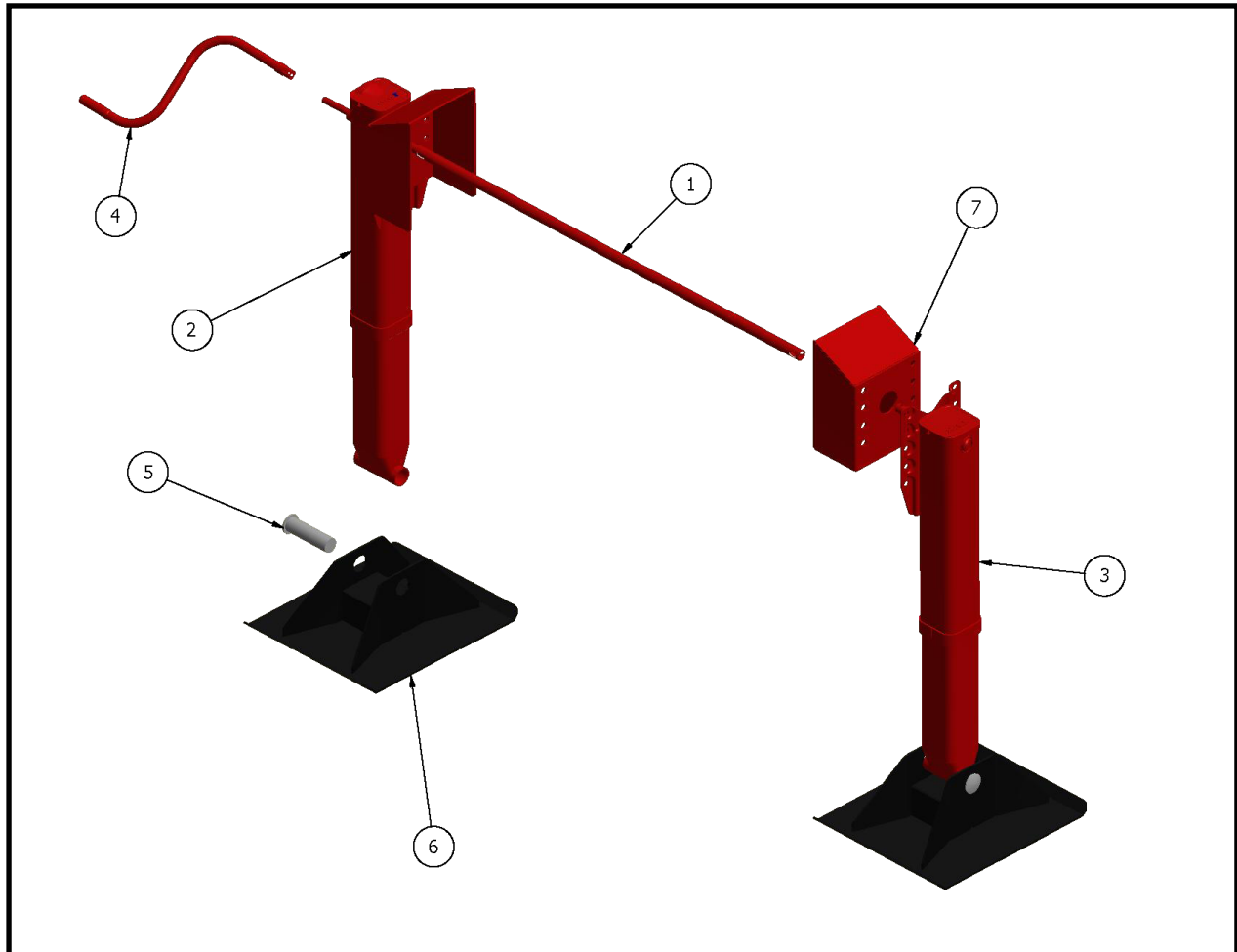
11	BAP85	Slack Adjuster-28 Spline - AUTOSLACK
12	BAP45	30/30 Air Chamber BRAKE
13	BAP50	Clevis Pins-Air Chamber Yoke-1/2"
14	BAP60	Air Chamber Yoke—Auto Slack
15	BAP285	Wheel Nuts 3/4
	BAP265	Disc Wheel 8.25 x 22.5 Uni-mount-White
	BAP280	Valve Stem 3 3/4"
	TW35	255/70R22.5/16 Radial Tire
	BAP10	Air Tank-9.5" Dia x 27.5" (24T Tender)
	BAP15	Drain Valve-5' Cable
	BAP25	ABS Brake Valve-WABCO
	BAP30	ABS Sensor Cable-10'
	BAP35	Relay Valve-Trailer Parking & Emergency-Sealco
	BAP120	Glad Hand-Red-Emergency
	BAP125	Glad Hand-Blue-Service
	BAP135	Glad Hand Seal w/Dust Flap
	BAP95	1/2 DOT Nylon
	BAP100	3/8 DOT Rubber
	BAP105	3/8 x 3/8 DOT Spring Hose Ends

**Do It Safe  
Every Time**

To learn more about our family and our company please visit [www.hayslti.com](http://www.hayslti.com) and watch our video

**"The Hays Difference"**

# Landing Gear Assembly



	Part #	Description
	TH100	Landing Gear Set-Jost
1	TH120	Landing Gear Cross Pipe-Jost
2	TH125	Landing Gear, Top Cover, Gear Side
3	TH130	Landing Gear, Top Cover, Non-Gear Side
4	TH145	LG Handle
5	TH140	LG Sandshoe Axle
6	OEM160	Sandshoes-Oversize-Tall
	OEM165	LG Sandshoe and Cross Angle Assembly
7	OEM135	Landing Gear Boxes

# Trailer Parts

Part #	Description
TH05	Fender Halves-Poly
OEM50	Fender Mount
TH85	Document Holder
TH88	Placard Holder-SS
TH90	Placard Holder-Poly
TH155	Mud Flaps-24 x 24-HAYS (Each)
OEM95	King Pin Plate-24T Tender
TH95	King Pin
OEM335	Ladder Assembly-Tender-Hays 24T-Rear-2-C
OEM336	Ladder Assembly-Tender-Hays 24T-Front-2-C
OEM337	Ladder Assembly-Tender-Hays 24T-Rear-3-C
OEM338	Ladder Assembly-Tender-Hays 24T-Front-3-C
OEM270	Bumper-Rear-End Caps & Back Plates-Hays 24T
OEM355	"H" Discharge Auger Guide-2-C
OEM-356	"H" Discharge Auger Guide-3-C
OEM276	Hose & Valve Cover-SS-2-C
OEM277	Hose & Valve Cover-SS-3-C

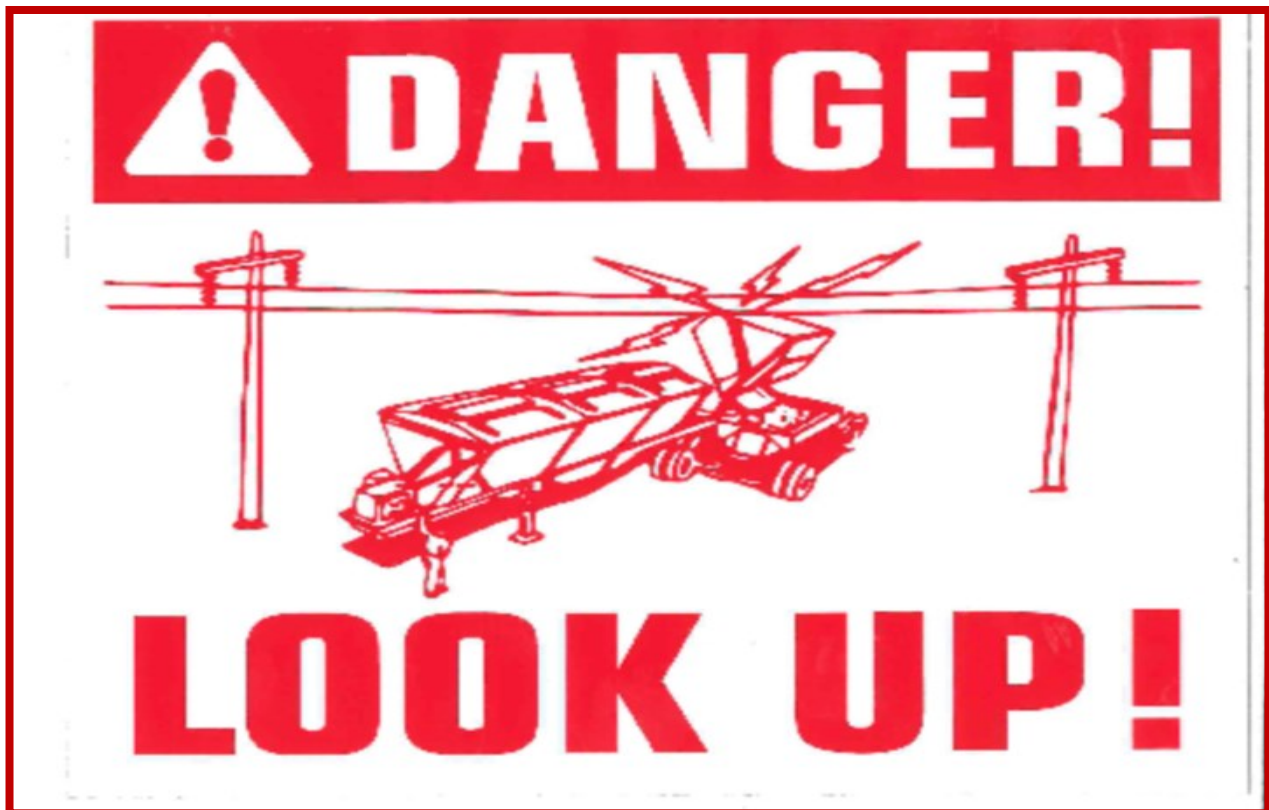
To learn more about our family and our company please visit [www.hayslti.com](http://www.hayslti.com) and watch our video

**"The Hays Difference"**

# Light Kit and Decals

	<b>Part #</b>	<b>Description</b>
	LWD130	Light Kit-Complete-Grote-Tender
	LWD210	Lights, Harness, main cable 7-conductor
	LWD250	Lights, Harness, Rear sill for Male-pin lamps
	LWD220	Lights, Harness, 216" Right front jumper
	LWD225	Lights, Harness, 72" Right front pigtail
	LWD255	Lights, Harness, 240" Right rear jumper
	LWD235	Lights, Harness, 48" Right middle pigtail
	LWD245	Lights, Harness, 54" Middle rear ML ID
	LWD230	Lights, Harness, 280" Middle harness jumper
	LWD260	Lights, Harness, 144" Left rear jumper
	LWD265	Lights, Harness, 24" L/R rear ML jumper
	LWD270	Lights, Harness, ABS Adapter plug
	LWD180	Lights, Oval Strobe Light
	LWD185	Lights, Pigtail Strobe Light
	LWD70	ABS Marker Light
	LWD145	Lights, Marker Red
	LWD150	Lights, Marker Yellow
	LWD190	Lights, Marker Grommet
	LWD165	Lights, Tail Red, Male pin
	LWD170	Lights, Tail Yellow, Male pin
	LWD195	Lights, Tail Grommet
	LWD200	Lights, Oval Grommet
	LWD400	24T Decal Kit
	LWD335	Decal-Bulk Hauler-Hand
	LWD340	Decal-Do Not Disconnect
	LWD320	Decal-Bulk Hauler Look Up
	LWD325	Decal-Slippery When Wet

# Decals



**Safety & Operations Decals**

**! DANGER!**

**NO RAILING  
SLIPPERY WHEN WET**

**! CAUTION!**

**DO NOT  
DISCONNECT  
TRACTOR FROM  
TRAILER WHILE  
ON SOFT OR  
UNEVEN GROUND**



**CAUTION**

- DO NOT WALK OR STAND ON THE END CAPS.
- DO NOT OPERATE THE VEHICLE AT HIGHWAY SPEEDS, WHILE TARP SYSTEM IS IN THE OPEN POSITION.
- DO NOT LOAD OR UNLOAD WITH TARP SYSTEM IN CLOSED POSITION.

**SRT-2®  
TARP OPERATION PROCEDURE**

TO OPERATE TARP REMOVE RETAINING PIN FROM CRANK HOLDER. WITH BOTH HANDS REMOVE CRANK FROM HOLDER. EXTEND CRANK ASSEMBLY TO A COMFORTABLE OPERATING POSITION. ROLL TARP COMPLETELY TO OPEN OR CLOSED POSITION. FINISH BY REPLACING CRANK IN OPPOSITE HOLDER AND REINSERT RETAINING PIN.

AGRI COVER, INC.  
P.O. Box 348  
Jonestown, ND 58102  
701-351-1477  
www.agricover.com

SERIAL NO. 78008

**CORRECT TENSION ADJUSTMENT**

**AGRI-COVER®  
PN 10875\_E**

**IMPORTANT! Peel warning stickers from sheet and attach to visible area near unloading controls inside cab and on box or trailer.**

PN 60814\_L

PN 3058\_A

THIS VEHICLE IS EQUIPPED WITH A HUB PILOTED WHEEL SYSTEM

10-Hole Sequence

**WHEEL INSTALLATION**

- AVOID WHEEL OR BRAKE DRUM BINDING ON HUB
- USE 2 PIKES FLANGE NUTS, RIGHT HAND 1/2-READ
- TORQUE 18-19 INCHES PER 3 OR 12-HOLE
- ACRAM
- TIGHTEN NUTS FIRST TO 1/2 TURN, THEN TO 150-200 FT-LBS TORQUE
- RETORQUE 50-100 LBS IN AFTER INSTALLATION. CHECK TORQUE PERIODICALLY THEREAFTER

B-Hole Sequence

Wheel and tire specifications are optional. ALWAYS REMOVE ALL AIR FIRST! ENSURE DEWINDING TORSION. Follow proper procedure as required by OSHA Regulations 1910.77 for tire and wheel servicing.

KIC

KIC WHEEL ENDS  
800-488-5422  
KIC-GROUP.COM

WARNING

SAFETY ALERT! (1) FOLLOW ALL TORQUE REQUIREMENTS. (2) DO NOT USE ANY COMPONENT WITH VISIBLY WORN OR DAMAGED THREADS. FAILURE TO FOLLOW THESE SAFETY ALERTS CAN LEAD TO LOSS OF VEHICLE CONTROL, PROPERTY DAMAGE, SERIOUS PERSONAL INJURY OR DEATH.

Mutchens Suspension Torque Requirements  
9600-9700 Series ( Decal Part Number 16088-01 Rev. J )

After an initial break in period, approximately 1000 miles, and at least every 4 months periodically thereafter, ALL bolts and nuts should be checked to insure that recommended torque values are being maintained.  
Oiled torque values listed are for new fasteners with lubricated threads. It is recommended that new installations be performed with oiled fasteners. For dry threads which have been in service, use the higher torque values which are noted below.

	OILED	DRY
1 1/8-7 ( 9500 / 9700 Rocker Bolt )	590 lb-ft	790 lb-ft
1-14 or 1-8 ( 9700 Radius Rod Bolt )	540 lb-ft	720 lb-ft
7/8-14 ( Axle U-Bolts & 9500 Radius Rod Bolt )	350 lb-ft	470 lb-ft
3/4-16 ( Axle U-Bolts )	310 lb-ft	420 lb-ft
5/8-18 ( Radius Rod Clamp Bolt )	130 lb-ft	170 lb-ft
5/8-18 ( Spring Retainer Bolt )	35 lb-ft	50 lb-ft

Mutchens Industries, Inc., P.O. Box 1427, Springfield, Missouri 65801-1427 Toll Free 1 (800) 654-8824

# Warranty

## 1. Manufacturing Warranty

- i. Hays LTI warrants that all equipment manufactured by Hays LTI, under normal conditions and proper service, will be free of defects due to improper manufacturing.
- ii. Hays LTI products carry a six month warranty that begins when the product is delivered to the original owner.
- iii. Any parts that are not Hays OEM parts will carry product warranty from original manufacturer. (*engine, valves, motors, etc.*)

## 2. Warranty Approval

- i. Warranty claims must be approved by Hays LTI prior to any work being done.
- ii. Work performed without approval will not be covered by the manufacturer warranty and all cost for repairs will be the responsibility of the customer.

# Safety First

